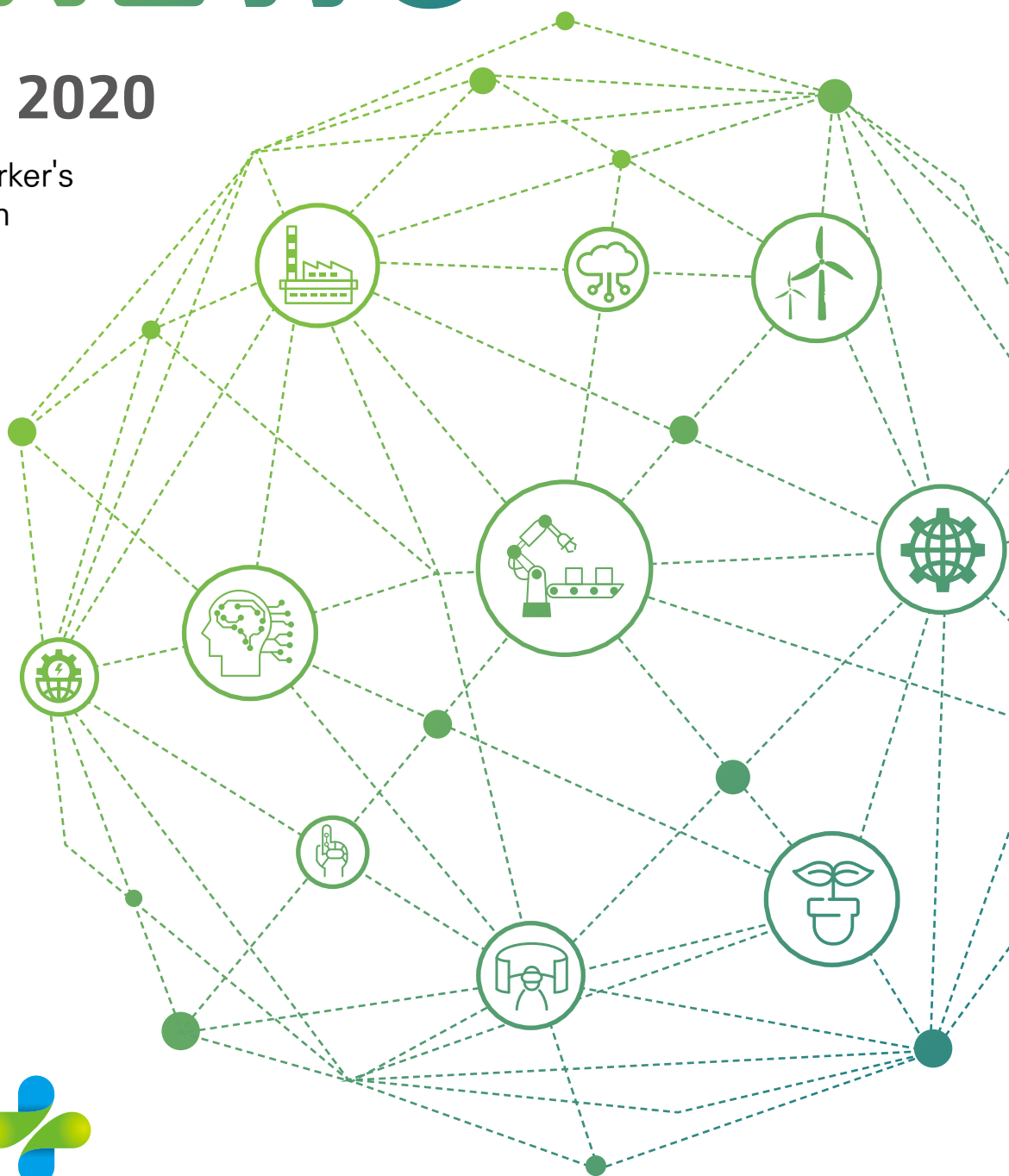


vol.  
106

# KOSHA NEWS

**August 2020**

Protecting Worker's  
Life and Health





# Contents

---

<b>News</b>	03	100% aids to facility costs for prevention of fire/explosion
	05	Systematic supports for workers' health management in Chungbuk region
	07	"Safety Grading System on Public Institutions" as a pilot project, Implements in August
	09	Public institutions lead in "Expansion of VR education on safety and health"
	11	Making safety management easier for manufacturing businesses with less than 50 workers
	13	KOSHA committed to prevent safety accidents for national defense
	15	Supports provided to workplaces vulnerable to heat wave

---

<b>OSHRI</b>	17	Learn how to analyze asbestos through videos
	19	No more difficulties with the reports on safety and health research

---

## Prevention measure for COVID-19

# 100% aids to facility costs for prevention of fire/explosion

Up to 25 thousand USD per business owner for costs to purchase ventilation fans and complex gas concentration meters



KOSHA offers aids to help business sites with less than 50 employees against accidents to avoid major accidents caused by fire and explosion.

Upon a series of recent major fatal accidents, including fire at Icheon Logistics Warehouse of May and fire at Yongin Logistics Center of July, the KOSHA allocates approximately 4.2 million USD from the revised supplementary budget to provide emergency aids for fire/explosion prevention facilities.

✚ ✚ These aids are given to small-scale business sites with less than 50 full-time employees requiring high-risk works with fire and explosion regardless of business types, and each eligible business owner can receive 100 % of the costs purchasing preventive equipment within the limit of 25 thousand USD.

– The limit on the amount aids (16.8 thousand USD → 25 thousand USD) and ratio of purchasing costs (70% → 100%) has been elevated on this occasion, and this expanded ratio of purchasing costs will remain effective only through the end of this year.

※ Excluded businesses: Companies belonging to enterprises group subject to limitations on mutual investment, public organizations, civil engineering/ construction business within top 700 at the rank of appraised amount for construction capability of the previous year and businesses without (overdue) Workers' Compensation Insurance

✚ ✚ Items subject to aids include preventive facilities for fire/explosion, such as ventilation fans and complex gas concentration meters, and additional aids of emergency evacuation guiding line for temporary fire-fighting facility are available to construction sites.

Division	High-risk business types*, i.e. manufacturing & service industry	Construction industry
Support Items	Ventilation fans & ducts, complex gas concentration meters, harmful gas monitoring system, non-combustible materials for welding works, gas detector and alarm devices	
	Explosion-proof electric machines and tools, fire-proof construction of building structure and mobile foam trailers	Emergency evacuation guiding line and guiding lights (for temporary fire-fighting facility)

\* Business sites manufacturing, using or handling combustible substances and logistics warehouses (including refrigeration and freezing), etc.

Moreover, the KOSHA offers aids a maximum of 70% of all costs (maximum 25 thousand USD for the same business owner) spent to improve harmful/risk factors at workplaces, including protective devices of machines and tools, in addition to preventive facilities for fire/explosion.

All applications for cost supports can be made through the official homepage ([clean.kosha.or.kr](http://clean.kosha.or.kr)) to build clean business sites or by visiting local front-line agencies. For further inquiries: 1544-3088.

✚ ✚ In particular, at construction sites where creation and destruction keep repeating, the headquarters of the sites need to file an application and take responsibility for management.

“Due to a series of recent major accidents caused by fire and explosion, business sites requiring high-risk works must take extra cautions,” Doo-yong Park, the President of KOSHA said. “I sincerely hope that more business sites can secure safety by taking technical training in parallel with the latest aids for the costs to purchase preventive facilities for fire and explosion,” Park stressed.

# Systematic supports for workers' health management in Chungbuk region

Chungbuk Workers Health Center opens on July 30 to offer professional occupational health service



Workers at small-scale workplaces in the Chungbuk region can benefit from occupational health services for free, such as job stress and work-related diseases.

The Ministry of Employment and Labor (MOEL, Minister: Jae-Kap Lee) and KOSHA are to establish and operate the Chungbuk Workers Health Center on July 30 to protect health of workers at workplaces with less than 50 employees and from vulnerable groups in the Chungbuk region.

## Overview of Chungbuk Workers Health Center opening ceremony

- Date & Time : At 14:00 on July 30, 2020
- Venue : Chungbuk Workers Health Center

✚✚ Despite rapidly growing cases of occupational diseases in recent years, the Chungbuk region has remained almost abandoned from professional health management in terms of time and cost issues.

※ Occupational disease rate per 1,000 workers in Chungbuk region\*: 4.36 in 2018 → 5.88 in 2019 (increased by 34.9 %)  
\*Cheongju-si, Jincheon-gun, Jeungpyeong-gun, Okcheon-gun, etc.

✚✚ To address such issues, KOSHA opened a Workers Health Center in the Chungbuk region for the purpose of fulfilling its role as a health manager for workers at small-scale worksites with less than 50 employees and at the blind spots isolated from current safety and health systems.

✚✚ The Chungbuk Workers Health Center will be operated by the Korean Industrial Health Association where comprehensive professional services for occupation health will be offered for free by full-time medical specialists, nurses, sports therapists, industrial hygiene managers and psychological counselors.

- Services are provided from 9:00 am to 9:00 pm during weekdays (Monday through Friday) in a flexible manner.
  - Services available include △ consultation by medical specialists (occupational and environmental medicine) through identification of risk factors by occupations, △ preventive consultation on job-related illness (Cerebro-cardiovascular, musculoskeletal), △ consulting on working environment, △ preventive consultation on job stress and △ professional training on safety and health.
  - With the building area of 1,000m<sup>2</sup>, the largest of workers health center in the nation, the Chungbuk Center can be accessed through personal visits by workers, and upon group reservations made by the business sites, the staff members of the center will pay personal visits to the sites to offer group consultations.
- ++ With the newly opened Chungbuk Center, a total of 23 Workers Health Centers are now in operation nationwide.

Doo-yong Park, the President of KOSHA, said, “By making systematic and professional consultation services for occupational health available to workers at small-scale workplaces in the Chungbuk region, I sincerely hope that this can contribute to preventing occupational disease.” Park added, “Business places and workers can count on service any time when professional health consultation is needed.”



# “Safety Grading System on Public Institutions” as a pilot project, Implements in August

Support for Pilot Project on assessment and verification of on-site operability



KOSHA fully commits to a pilot project, “Safety Grading System on Public Institutions” by the Ministry of Economy and Finance.

++ The “Safety Grading System on Public Institutions” is a system implemented by the Ministry of Economy and Finance to elevate the level of safety management at public institutions where the public institutions are evaluated by dividing into five different levels of safety management.

As the pilot program, including examination, is implemented for two months from August, the KOSHA attended an inauguration ceremony of “the examination group for pilot program of safety grading system” held at the Seoul Regional Public Procurement Service located at Seocho-gu, Seoul on July 31 and engages in full-out supports as an “assistant examination agency.”

++ An “assistant examination agency” is responsible for supporting the verification process of assessments and on-site operability regarding the matters, including decisions on safety level made by the “Safety Grading Examination Group” consisting of governmental and private members.

++ For the purpose of successful settlement of “Safety Grading System on Public Institutions,” the KOSHA has newly established an organization dedicated to such assistances in May of this year and is currently in the process of conducting a service of “study on advancement of the evaluation system concerning the level of safety activities by public institutions” with a view to developing a scientific examination system.

This pilot program implemented this year by the Ministry of Economy and Finance will be conducted oriented to 64 major public institutions.

- ++ Those 64 institutions\* subject to the pilot program include the worksites with manufacturing facilities, construction expenses worth 420 thousand USD or more, management of multi-use structures and high-risk research centers.

\* 30 public enterprises, 25 quasi-government agencies and 9 public institutions

- Upon completion of examinations, the Ministry of Economy and Finance is scheduled to disclose the safety levels of each institution and plans to raise the safety level through training and consultation for any inadequate matters.

- ++ The “Safety Grading System on Public Institutions” will be implemented in earnest next year targeting approximately 110 public institutions where comprehensive examination will be conducted according to the level of activities and performances within the scope of three core elements, including safety competence, safety level and safety value of public institutions.

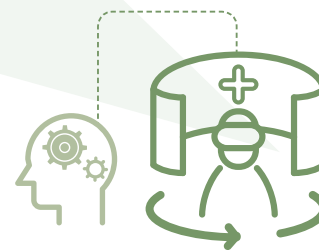
“Since social values and public demands regarding safety have been highly raised, a leader’s role required for public institutions to assume became significant more than ever,” Doo-yong Park, the President of KOSHA, said. Park made sure, “We are determined to fully support the Ministry of Economy and Finance as well as the related agencies in order for the Safety Grading System to contribute to increasing the safety level at both workplaces and our society.”





# Public institutions lead in “Expansion of VR education on safety and health”

Business agreement concluded among KOSHA,  
EWP, K-water, LH



Four (4) public institutions (hereinafter referred to as the “win-win cooperative agencies”), among the KOSHA, Korea East-West Power Corporation (EWP), Korea Water Resources Corporation (K-water) and Korea Land and Housing Corporation (LH), executed a “business agreement on win-win and cooperation of public institutions for expansion of VR education” on July 23.

## Business agreement on win-win and cooperation of public institutions for expansion of VR education

- Date : At 14:00 on July 23, 2020
- Venue : Northern Seoul Area Office of KOSHA
- Attended by : Director General of Education & Public Relations of KOSHA, Chief of Disaster Safety of EWP, Head of Safety Innovation of K-water, Chief of Safety Planning LH

- ✚ ✚ This agreement aims to expand experience-based safety training programs using VR technology by reflecting the society-wide consensus where the significance of occupational accident prevention and non-face-to-face training is being highly regarded.

The win-win cooperative agencies plan to develop a total of 225 educational VR materials for safety & health by the end of this year.

- ✚ ✚ Such educational materials are designed to escalate the engagement in education as they are produced to help learning safe working practices through indirect experiences with risky situations under virtual reality where the themes are selected by types and works in which fatal accidents are highly prone to occur.

### List of safety & health VR contents subject to free supports



- KOSHA (210 types): Caught in/between & collision, steel frame works, press works, excavator works, etc.



- EWP (7 types): High-altitude works, electric shocks, accidents with tools, falls of heavy objects, etc.



- K-water (4 types): Scaffolding works, fall of materials, landslide, suffocation, etc.



- LH (4 types): Stabbing, collision, fall, collapse, etc.

The materials developed will be unveiled at the Safety and Health VR Theater (360vr.kosha.or.kr), and they will be further utilized for safety & health training at more business establishments.

- ✚ ✚ In particular, unifying the operational protocol of such materials between agencies, this project is bound to solve existing problems where agencies were unable to utilize the materials produced by other agencies.
  - Besides, it is expected to enable public institutions sharing the materials with one another and help subcontractors of public institutions and private businesses to fully utilize the educational materials on safety & health.
- ✚ ✚ On the other hand, the KOSHA has made a total of 465 types of safety & health VR educational materials available so far where such materials can be accessed at the Safety and Health VR Theater of the KOHSA.

Gwang-jae Ko, the Director General of Education & Public Relations of KOSHA said, “Entering the post-COVID-19 era, the safety & health training also requires new practices.” and emphasized, “Based on this agreement, I truly hope that newly developed VR educational materials with high quality will be widely employed and contribute to preventing occupational accidents.”

# Making safety management easier for manufacturing businesses with less than 50 workers

Close-knit assistance for self-regulatory safety management through monthly on-site visits by private safety management agencies



KOSHA aims to implement a “close-knit support for self-regulatory safety management” to ensure building a safety management system within workplaces by delivering safety management services for manufacturing sites with less than 50 employees where lack safety management personnel.

The “close-knit support for self-regulatory safety management” is implemented to prevent occupational accidents at the business sites with less than 50 employees, responsible for approximately over 70% of fatal occupational accidents from the manufacturing industry.

✚✚ Reflecting the results from analysis on the fatalities for the past 5 years at the manufacturing business sites with less than 50 employees applying for this project, the KOSHA will first select about 4,700 business sites with high risks of occupational accidents and provide them with safety management services for free.

✚✚ The private safety management agencies will pay on-site visits to the business sites subject to supports and offer △ close-knit assistance on a regular basis and △ one-point technical support.

– The “close-knit support for self-regulatory safety management” represents a project designed to pay on-site visits to workplaces at least once a month on a regular basis and offer assistances to improve capability of self-regulatory safety management, including ❶ business affairs for safety & health management officers, such as risk assessment, ❷ identification and improvement of core factors for fatal accidents at the manufacturing industry, i.e. being trapped (crush injuries), and ❸ construction of safety & health management system.

– The “one-point technical support” means a project aiming to make on-site visits during the period of which the probability for fatal accidents, i.e. maintenance and repair works, is high and to offer on-site training and technical supports.

- ✚ ✚ The duration of the project is set to be five months between August and the end of December of 2020, and will be automatically extended until the end of 2021 when the budget for 2021 is determined.

Business sites interested in the close-knit support for self-regulatory safety management need to submit an application to the private safety management agencies at the relevant regions between July 22 and 31, and further details are available at the KOSHA website (<http://www.kosha.or.kr>).

“The manufacturing business sites with less than 50 employees are relatively prone to experience the lack of safety management capabilities and suffer from the high ratio of fatal occupational accidents,” Doo-yong Park, the President of KOSHA, said. He added, “I sincerely hope that the project can help building safety management systems within workplaces and protecting the lives of workers.”



# KOSHA committed to prevent safety accidents for national defense

Business agreement signed between KOSHA and Ministry of Defense on July 10, 2020



KOSHA and the Ministry of Defense (Vice Minister: Jae-min Park) signed the “Business Agreement to Build Safety Management System on National Defense and Expand Safety and Health Culture” at the Ministry of Defense on July 10 to prevent safety accidents for soldiers of the armed forces, industrial workforce of the future.

## Overview of signing ceremony to build the safety management system for national defense and establish safety and health culture

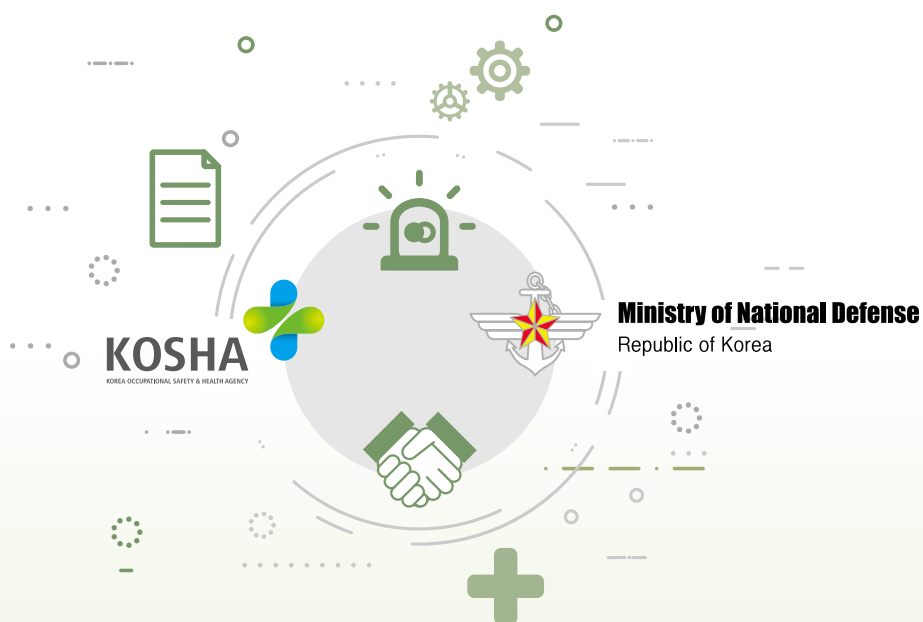
- Date and venue : At 11:40 on July 10, 2020 at Army Hotel
- Attended by : Doo-yong Park/President of KOSHA, Jae-min Park/Vice Minister of MOD, and officers

This agreement was executed for the purpose of elevating executive power and effectiveness of safety management for national defense based on mutual cooperation between the two organizations.

- + + Based on the agreement concluded, the KOSHA is to support ▲ joint research on policies for the next three years to develop the safety management system for national defense, ▲ investigation of military safety accidents, ▲ consulting to help building safety management systems within the troops and ▲ safety and health training
  - In particular, the KOSHA provides professional workforce for investigations into major safety accidents in order to improve professionalism and public confidence in the investigations of military safety accidents.
  - The agreement engages in joint research and technical consultations to ensure further progress of systems and policies of the safety management system for national defense, including construction of information system on safety management.

Until now, the KOSHA has offered safety and health training (300 times for 35,000 people) for troops as well as consultation on safety and health (17 locations) for three years since 2017 after signing a business agreement with the army and navy. Moreover, the KOSHA has been supporting to prevent safety accidents at military bases by conducting fact-finding surveys on working environments at maintenance facilities and joint research on health management measures for military personnel.

Doo-yong Park, the President of KOSHA, stated, “The KOSHA has investing utmost efforts to improve the level of safety and health at workplaces as an institution specialized in prevention of occupational accidents; and through the present agreement, we are determined to do our job at the highest level to protect the life and health of all military personnel, industrial workforce of the future, based on our technology and expertise concerning safety and health.”



# Supports provided to workplaces vulnerable to heat wave

Heat-related illness prevention kits to construction sites worth less than 4.2 million USD / Support to purchase mobile air conditioners and sun shelters to small worksites with less than 50 employees / Door-to-door mobile health consultation services during July & August



KOSHA brings its supports to workers at workplaces vulnerable to heat waves, including construction sites.

First, the KOSHA distributes the “KOSHA Cool Kit,” a preventive kit for heat-related illness consisting of cool oversleeves, cool scarves and ventilating covers of safety helmets, to workers at small-scale construction sites worth less than 4.2 million USD together with on-site technical training.

When a small-scale business establishment with less than 50 employees purchases a “mobile air conditioner” or “sun shelter for construction sites,” the KOSHA assists up to 70% of the costs spent within the scope of 16.8 thousand USD.

In addition, the KOSHA implements “door-to-door mobile health consultation” services where nurses make door-to-door visits to construction sites to perform medical checkup for workers for two months from July to the end of August, the hottest season of the year.

✚✚ The “door-to-door mobile health consultation” is offered by nurses affiliated with 23 Workers’ Health Centers under the KOSHA make personal visits to construction sites worth less than 4.2 million USD.

According to the statistics on occupational accidents, the number of victims from heat-related illness, such as heat waves, for the past 5 years was 153, and 27 of them resulted in fatality. In particular, the construction industry requiring substantial outdoor works is found responsible for 77 injured cases and 19 fatality cases.

► Occupational accidents from heat-related illness for the past 5 years (2015–2019)

\*( ) indicates the number of fatality cases

Type	Total	2015	2016	2017	2018	2019
Total	153(27)	7(1)	34(6)	25(5)	65(12)	22(3)
Construction Industry	77(19)	4(1)	15(4)	12(4)	33(7)	13(3)

Moreover, the KOSHA proposed the three basic principles for prevention of heatstroke, “water, shade and rest,” and presented the OPL detailing the guideline on phased countermeasures for heat wave as below.

► Guideline on phased countermeasures for heat wave

Type	Wind chill	Countermeasures
General		Offer sufficient water; secure shaded places
Attention	31 degrees or higher	Preliminary checkup on a group sensitive to heat-related illness
Alert	33 degrees or higher for 2 or more days (heat wave alert)	<ul style="list-style-type: none"> <li>– Rest at shaded areas for 10 minutes every hour</li> <li>– Reduced hours for outdoor works or adjustment of working hours during the hours of heat wave (14:00–17:00)</li> <li>– Additional rests for a group sensitive to heat-related illness</li> </ul>
Warning	35 degrees or higher for 2 or more days (heat wave warning)	<ul style="list-style-type: none"> <li>– Rest at shaded areas for 15 minutes every hour</li> <li>– Suspension of outdoor works, unless unavoidable, during the hours of heat wave (14:00–17:00) (Rest must be provided even to the unavoidable outdoor works)</li> <li>– Restriction on outdoor works for a group sensitive to heat-related illness</li> </ul>
Danger	38 degrees or higher	<ul style="list-style-type: none"> <li>– Rest at shaded areas for 15 minutes every hour</li> <li>– Suspension of outdoor works except the works requiring emergency measures, such as disaster and safety management, during the hours of heat wave (14:00–17:00) (Rest must be provided even to the emergency works)</li> <li>– Restriction on outdoor works for a group sensitive to heat-related illness</li> </ul>

“As this summer, accompanied with COVID-19, is expected to bring the number of days of heat wave more than normal years, extra attention needs to be paid,” a person concerned at the KOSHA said. “Business owners need to invest extra efforts and care in order to practice the three basic principles for prevention of heat waves: water, shade and rest,” the personnel stressed.



# Learn how to analyze asbestos through videos

OSHRI produces and distributes educational videos on analysis of asbestos



The Occupational Safety and Health Research Institute (OSHRI, Director General: Ko, Jae-cheol) developed the first educational videos for asbestos investigation agencies and related researchers to easily learn how to analyze asbestos.

- ++ With heightened society-wide interests in asbestos, such as troublesome management of asbestos at school buildings, the needs to secure reliability for analysis competence of asbestos investigation agencies are on the rise.
- ++ Subsequently, OSHRI developed video materials to not only overcome the difficulties of face-to-face training caused by COVID-19 but also support training for new asbestos analysts.

The newly developed educational videos are comprised of two types where one is the “in-air asbestos analysis method using a phase-contrast microscope (12’47”)” and another one is the “asbestos analysis method from solid samples using a polarizing microscope (31’51”)”.

- ++ The videos contain key details, a series of asbestos analysis processes, for instance, how to use a microscope, sample treatment and deduction of findings. Moreover, they allow easily learning of the order and details of experiments that are usually considered difficult to understand.

Five hundred (500) educational videos have been produced in a format of DVD to be provided to 197 asbestos investigation agencies across the country designated by the MOEL and asbestos analysis laboratories. They will be released through the OSHRI’s Youtube channel (OSHRI KOSHA) as well.

OSHRI has been developing educational materials for asbestos analysis and offering training programs to develop professional workforce aiming to improve accuracy and precision of analysis. However, all face-to-face training programs are currently suspended due to COVID-19.

++ OSHRI in 2019 developed two types of educational videos (organic compounds, metal) regarding analysis method for samples to measure working environment and released the videos through the OSHRI's Youtube channel.

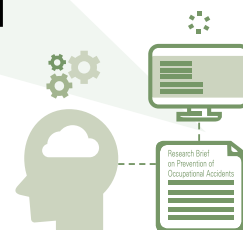
“With development of educational videos on asbestos analysis, I hope that researchers can better understand experiment processes and improve analysis techniques,” The Director General Ko stated. “OSHRI will do our best to improve social values by constantly sharing OSHRI's professional technology competency with people,” Ko added.

#### ► Summary of Educational Videos

Title	Entire Length	Key Details
In-air asbestos analysis method using a phase-contrast microscope	12 minutes 47 seconds	<ul style="list-style-type: none"> <li>- Apparatus and reagent</li> <li>- Pre-processing of sample</li> <li>- Sample analysis</li> <li>- Processing of findings</li> <li>- Blank sample</li> </ul>
Asbestos analysis method from solid samples using a polarizing microscope	31 minutes 51 seconds	<ul style="list-style-type: none"> <li>- Apparatus and reagent</li> <li>- Pre-processing of sample</li> <li>- Sample analysis</li> <li>- Processing of findings</li> </ul>

# No more difficulties with the reports on safety and health research

OSHRI publishes the 1st Issue of  
“Research Brief on Prevention of Occupational Accidents”



The OSHRI materials designed to help the general public better understanding the findings from safety and health studies have been published.

The OSHRI published the 1st issue of “Research Brief on Prevention of Occupational Accidents (hereinafter referred to as the “Research Brief”)” to expand the availability of the reports on safety and health studies and to help broadening the social consensus regarding the prevention of occupational accidents.

✚✚ The Research Brief is a publication summarizing study reports with about 100 pages into 4 pages or less in order to help better understanding the core details where the OSHRI plans to publish one brief every week focusing on a single topic after selecting 25 cases out of 75 study reports conducted last year.

The topic of the 1st issue of the Research Brief is the “investment effects on prevention of occupational accidents of companies based on financial statements,” where the brief summarizes the details of studies concerning the correlation between occupational accidents and business performances, such as sales revenue and operating incomes of the businesses experiencing occupational accidents from the businesses listed on the KOSPI\*.

\* Korea Composite Stock Price Index

✚✚ The brief quantitatively analyzed the significance of investment for prevention of occupational accidents since the businesses affected by occupational accidents were found to have their sales revenue and operating incomes declined.

The OSHRI is scheduled to publish the next issue by summarizing the “results from fact-finding surveys on working environment at school meal service units.”

✚ ✚ These results from the surveys have been provided to the relevant agencies and schools after being reflected on the “implementation plan on procurement of pulmonary health for meal service workers” developed for the first time by the Ulsan Metropolitan Office of Education (Superintendent: Ok-hee Noh) in March of this year.

The OSHRI plans to unveil the Research Brief via online and to distribute it to the National Assembly and OSH-related agencies at the end of every month after aggregating the Research Brief published during the month.

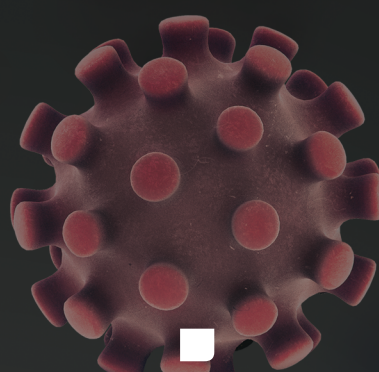
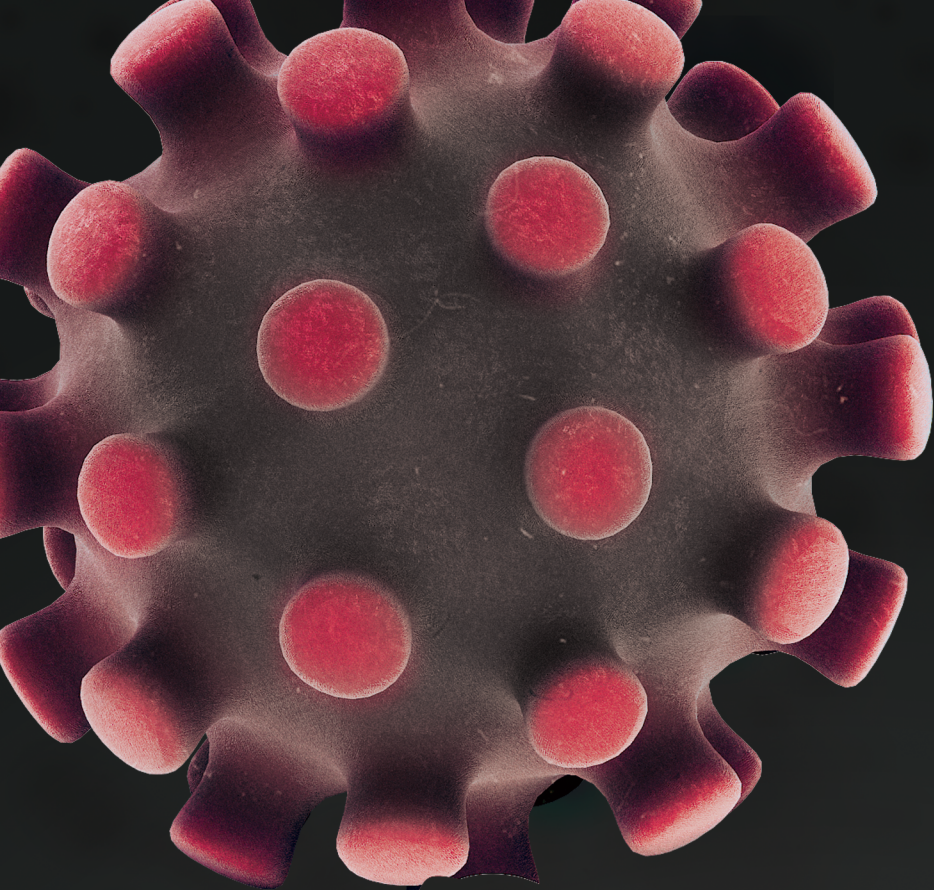
✚ ✚ In parallel, the OSHRI aims to produce the brief in a format of card news to facilitate better understanding and to release through social media outlets of the KOSHA and OSHRI.

✚ ✚ The upcoming Research Brief and the 2019 Report on Safety and Health Research is available on the OSHRI website (<http://kosha.or.kr/oshri>).

“Through this Research Brief, I hope that everyone can easily understand the research reports and the brief can be fully utilized to help improving legal systems regarding occupational safety and health,” Jae-cheol Ko, the Director General of OSHRI, said. “We will keep working on research to ensure workplace safety and protect workers’ health.” Ko added.

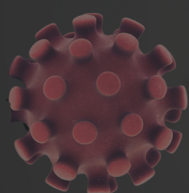




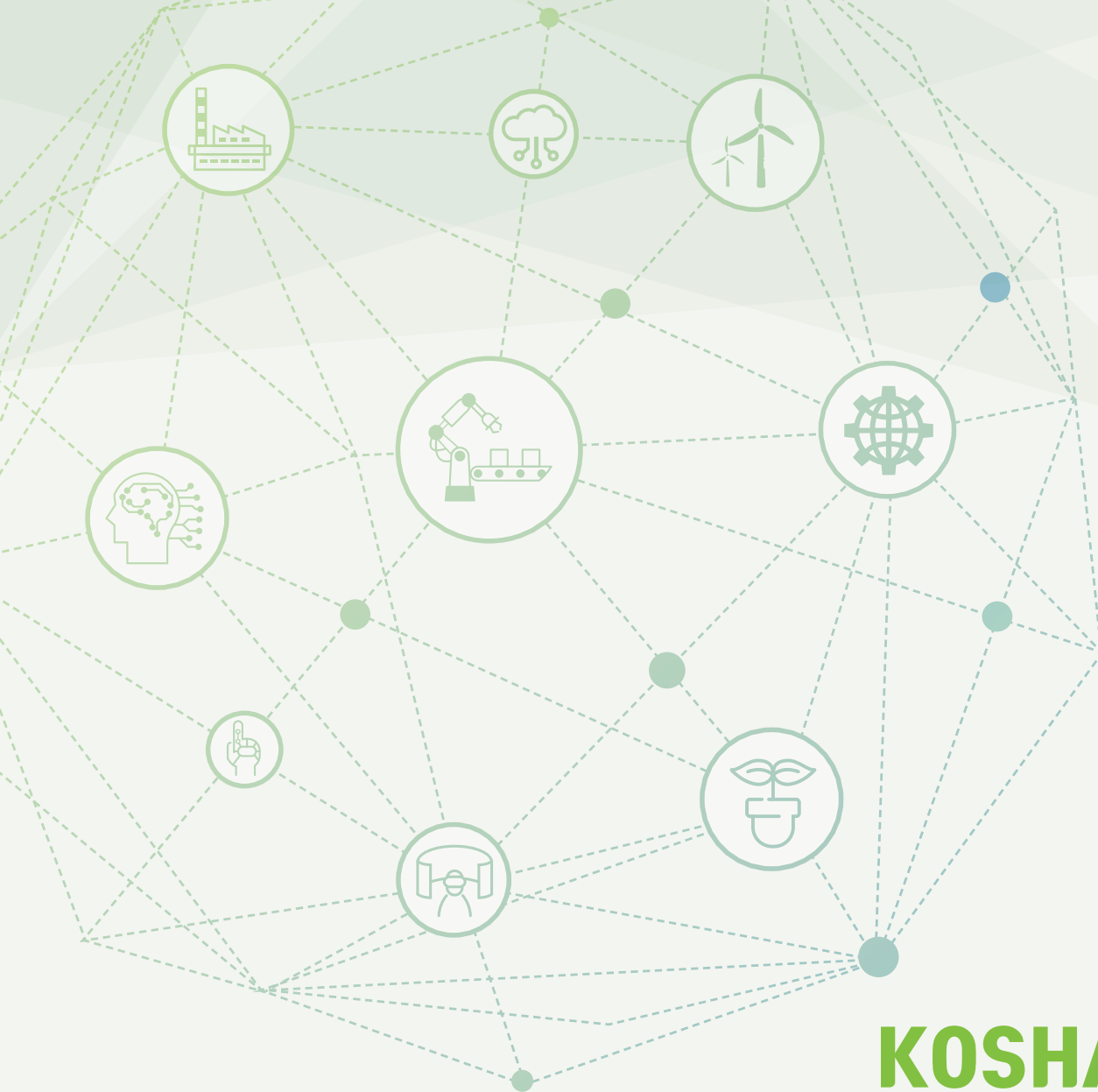


# Coronavirus Disease 2019

Prevention measures for COVID-19



Resources >



# KOSHA NEWS

Protecting Worker's Life and Health

## Published by

Korea Occupational Safety and Health Agency  
400 Jongga-ro, Jung-gu, Ulsan,  
44429 Republic of Korea

**Tel.** +82 52 7030 745

**Fax.** +82 52 7030 326

**E-mail.** [overseas@kosha.or.kr](mailto:overseas@kosha.or.kr)

**Web(Kr).** [www.kosha.or.kr](http://www.kosha.or.kr)

**Web(En).** <https://www.kosha.or.kr/english/index.do>

Copyright © 2020 by KOSHA For right of reproduction or translation, application should be made to the International Cooperation Center, Korea Occupational Safety and Health Agency.