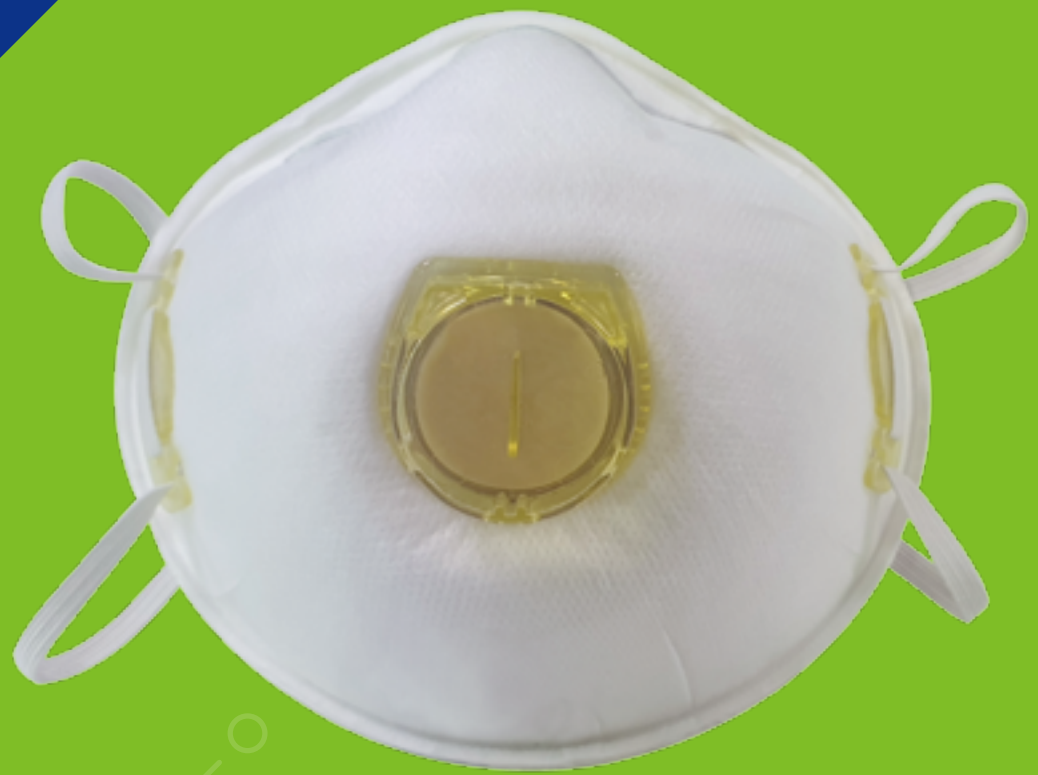


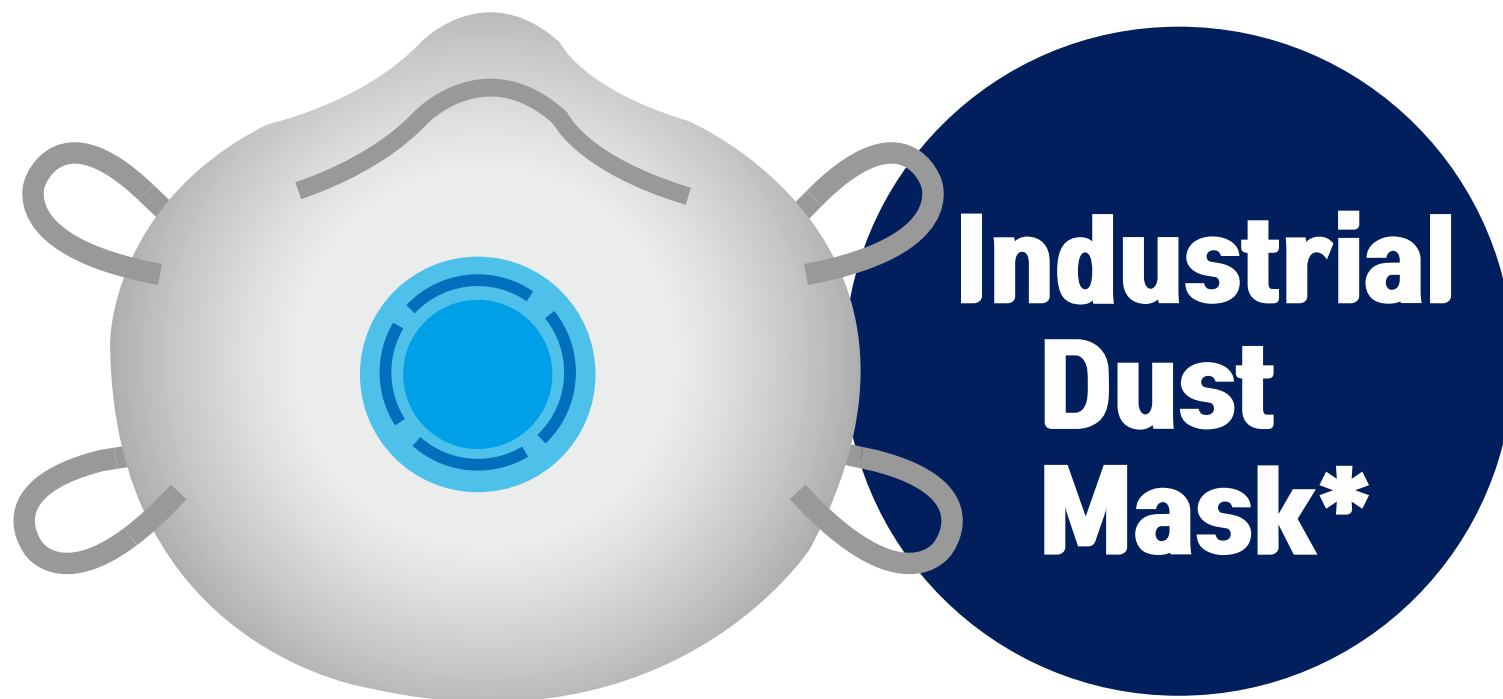
How to **properly choose** a DUST MASK?



Ministry of
Employment and Labor



What is a dust mask for?



A dust mask is a certified personal protective equipment to protect workers from harmful substances in workplace.

* Respirator

Type and Usage

Dust mask ratings offer different level of protection based on the **filtration efficiency, leakage rate, etc. Please refer to the followings for **the usage** :**

Special Grade

work environment exposed to carcinogenic substances such as asbestos, beryllium, etc. (e.g. FFP3)

First Grade

work environment producing metal fumes formed by welding, etc. (e.g. FFP2)

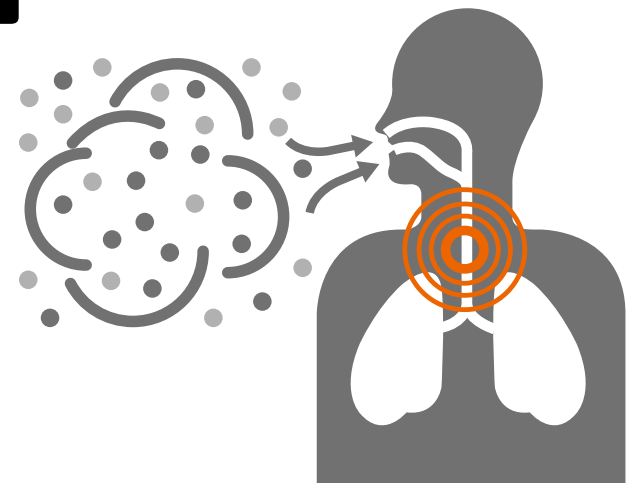
Second Grade

work environment producing dust (e.g. FFP1)

Proper use of the dust masks

Step 1

“Dust masks are used in environments with dust encountered during working activities, to protect your respirator.”



Proper use of the dust masks

Step 2

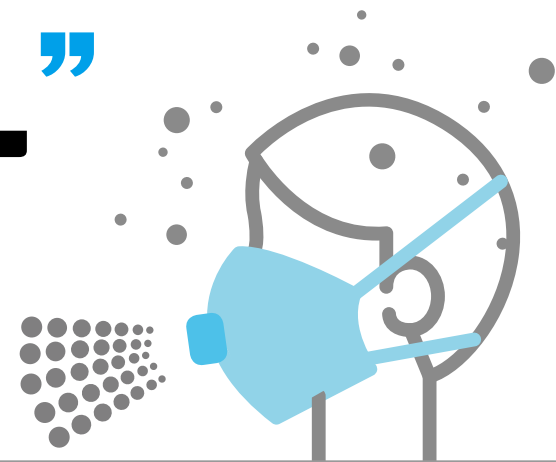
“ Depending on the task type or dust concentration, select the type of masks properly.”



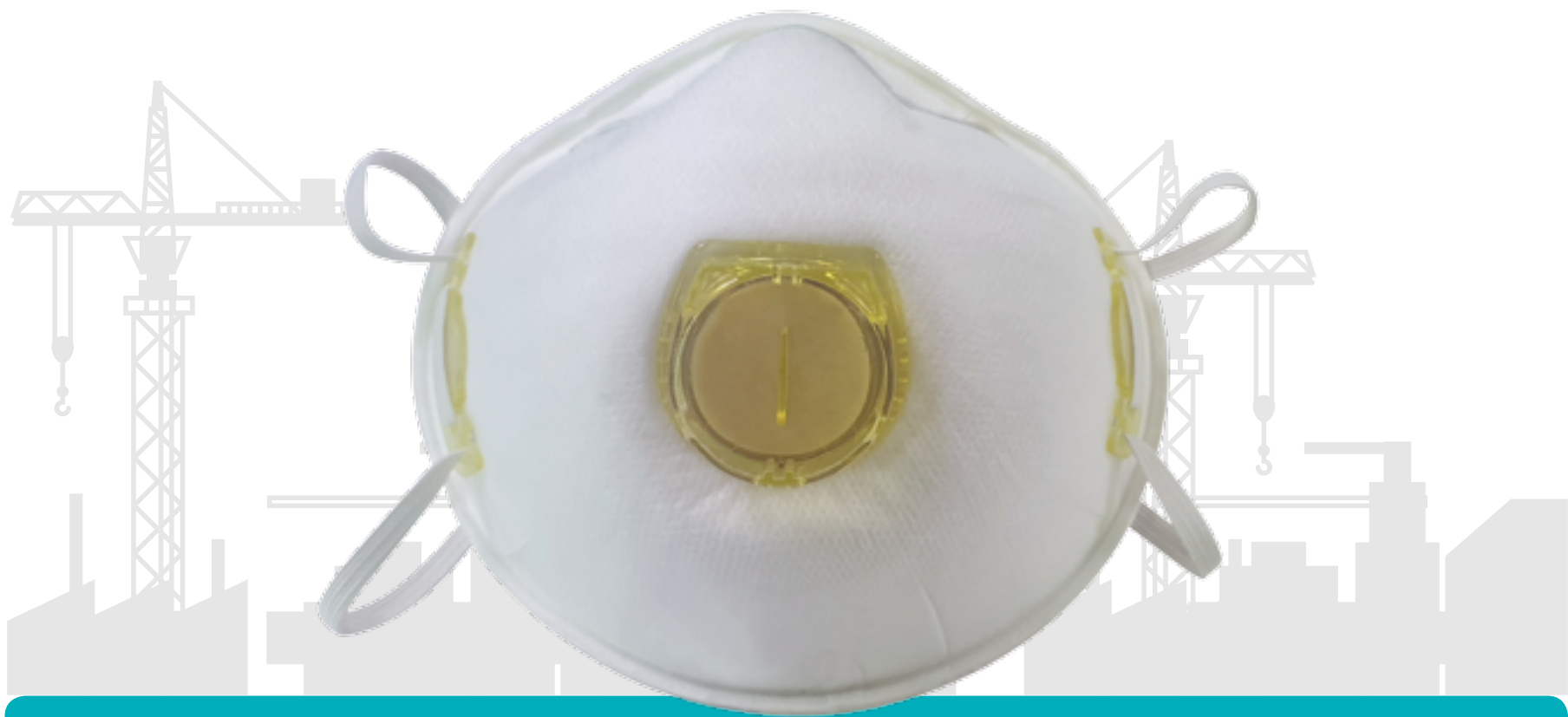
Proper use of the dust masks

Step 3

“A dust mask with a valve can expel virus when the user **exhales**.”



Therefore, we don't advise the general public to wear the dust masks in order to prevent COVID-19 infection.



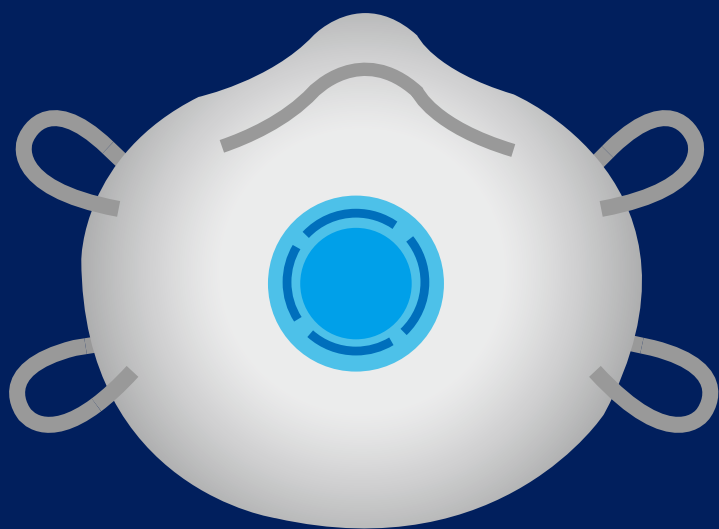
Dust masks for Industry

Medical masks for Healthcare workers

Hygiene masks for the General Public

**Protect safety of everyone
by choosing right masks**

**Dust masks are for
those who work
in the environment
producing dust.**



**Dust masks
with valves are
not advised to use for the
prevention of COVID-19
infection due to the
expulsion of the virus.**



Ministry of
Employment and Labor

KOSHA
KOREA OCCUPATIONAL SAFETY & HEALTH AGENCY

