



# **MALAYSIA'S OSH ISSUE AND DIRECTION**

**JINURAH SINTIAN  
DEPARTMENT OF OCCUPATIONAL SAFETY AND HEALTH  
MALAYSIA**



# **OSH ISSUE IN MALAYSIA**

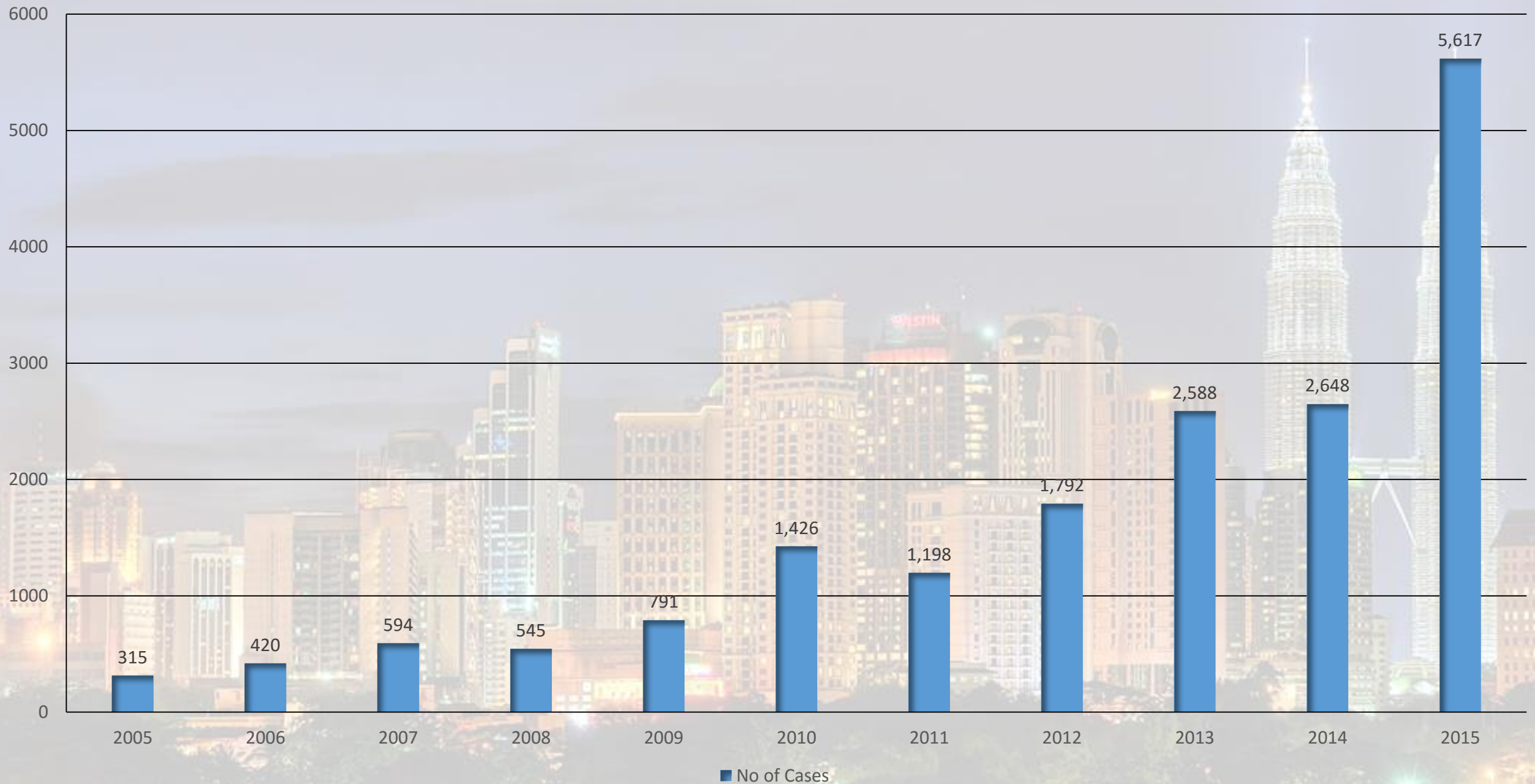


# INDUSTRIAL ACCIDENT STATISTIC AT WORKPLACE (2004-2015)





## REPORTED OCCUPATIONAL DISEASE AND POISONING (2005-2015)



## **TOP 3 SECTORS WITH HIGHEST OCCUPATIONAL ACCIDENTS**

- Manufacturing
- Agriculture, Forestry And Fishing
- Construction

## **3 SECTORS WITH HIGHEST OCCUPATIONAL DISEASES AND POISONING**

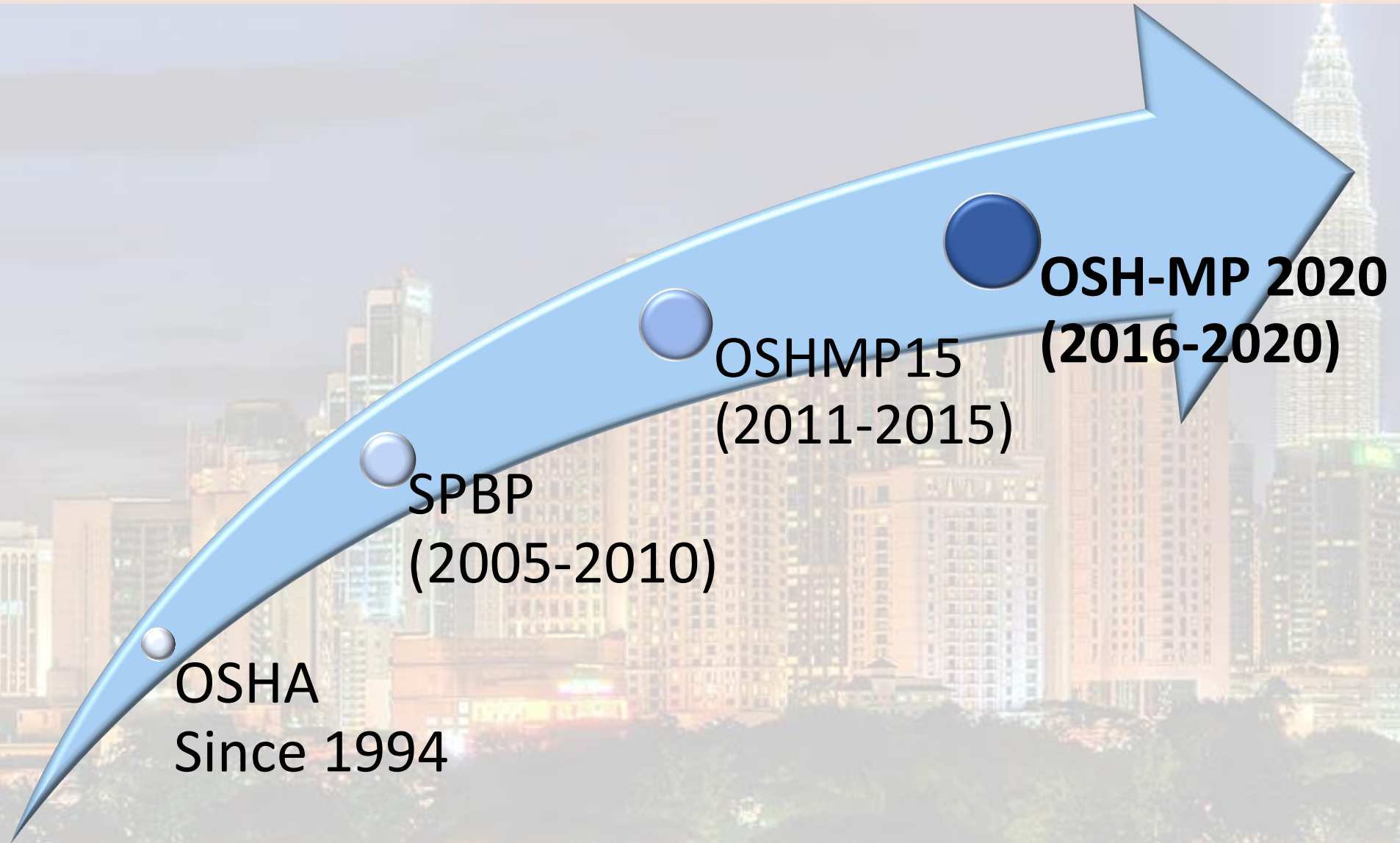
- Manufacturing
- Public Services
- Agriculture, Forestry & Fishing



# **OSH DIRECTION IN MALAYSIA**



# OSH DIRECTION IN MALAYSIA





# OSH STRATEGIC MILESTONE

## OUTCOME: OSH OWNERSHIP

- Enhance competencies of officers & OSH practitioners
- Strategic alliances
- Increase enforcement activities
- Focus on critical sectors (SME, BC, Agriculture, Transportation & School)
- Conduct R&D
- Enhancing leadership (gov.)
- Regulate OSH MS

DOSH  
2005-2010 ➤

## OUTCOME: SELF REGULATION

- National policy framework on OSH
- Enhance tripartite co-operation
- Promote preventive culture
- New skill & competencies are acquired & developed
- Strategic alliance at regional level
- Increase enforcement activities
- Focus on soft issues, ergonomic, stress & etc.
- R&D – structured & defined
- Enhancing leadership (employers/Union)
- OSH MS in place

DOSH  
2010-2015 ➤

## OUTCOME: PREVENTIVE CULTURE

- Enhance public awareness on OSH
- Self regulation become a practice
- National policy & framework on OSH established
- Promote preventive culture & well practice
- Create an expert group in various field & skill
- Strategic alliance at international level
- Increase enforcement activities
- Focus on new emerging hazards
- R & D – research outcomes driven
- Enhancing leadership (Social Partners & Public)
- OSH MS as part of business

DOSH  
2015-2020 ➤

Preventive  
OSH  
Culture

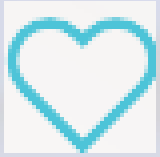
OSHMP 2020



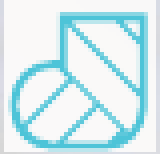
A nighttime photograph of the Kuala Lumpur skyline. The Petronas Twin Towers are the most prominent feature on the right, illuminated with white lights. Other skyscrapers and buildings are visible in the background, some with warm yellow lights. The foreground shows dark silhouettes of trees and some lower-level buildings with lights. A semi-transparent grey banner is overlaid across the middle of the image.

# **OSH MASTER PLAN (2016-2020)**

## OSH TARGET BY 2020



To reduce fatality rate to 4.36/100,000 workers  
(2015 status: 4.84)



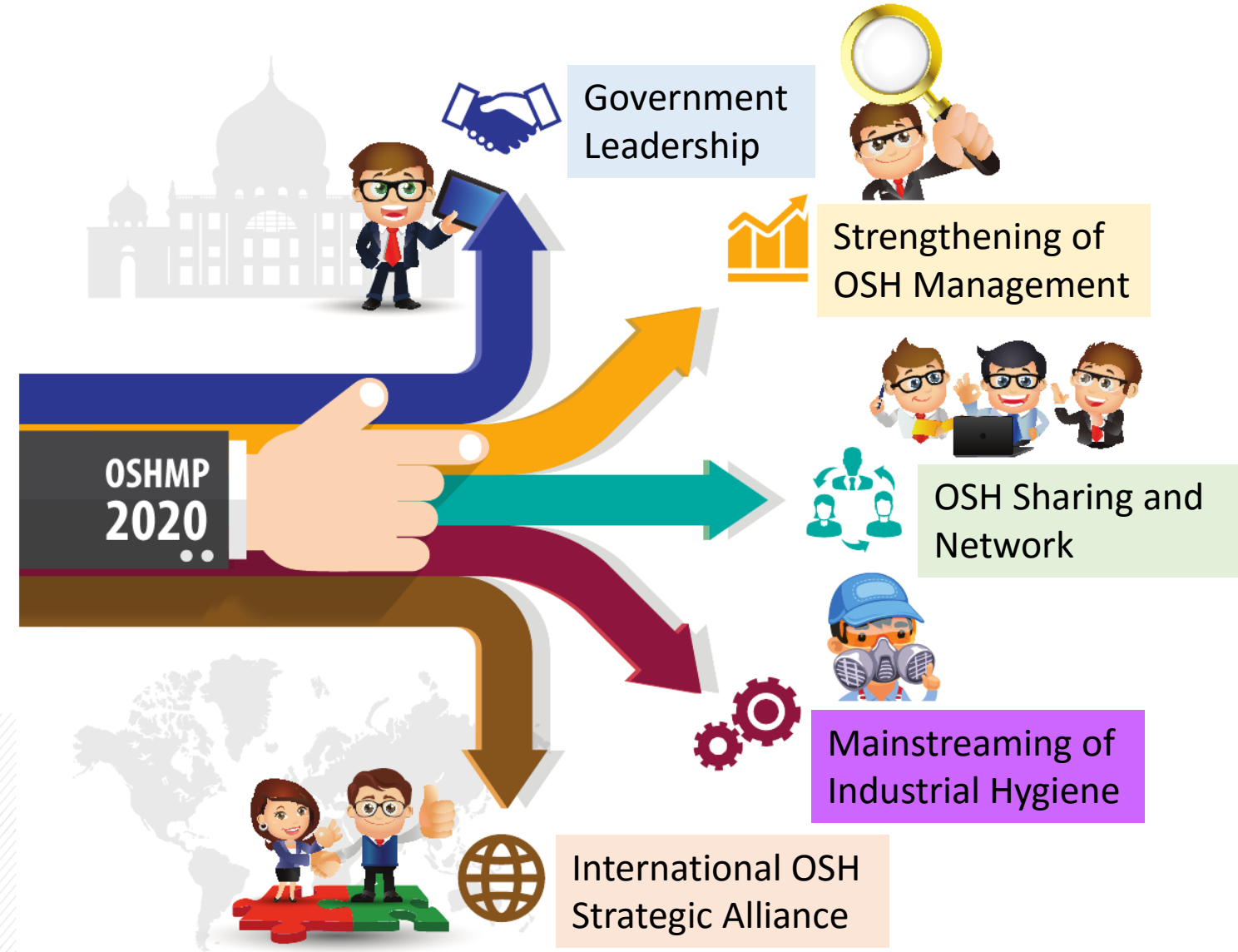
To reduce accident rate to 2.53/1000 workers  
(2015 status: 2.81)



To increase reporting of occupational disease and poisoning  
by 30%  
(2015: 5960 cases reported)



# OSH MASTER PLAN 2016-2020 STRATEGY



# OSH MASTER PLAN 2016-2020 PROGRAMS



## Government Leadership

Program 1 – Government as a role model for OSH

Program 2 – National OSH sharing

Program 3 – Policy and legislation

Program 4 – Data and OSH research

Program 5 – Enforcement capabilities



## Strengthening OSH Management at Workplace

Program 1 – OSH knowledge and skills

Program 2 – OSH compliance support

Program 3 – Promotion of preventive culture

Program 4 – OSH Innovation

Program 5 – Effective OSH Enforcement

Program 6 – Increase the number and quality of OSH Practitioner



# OSH MASTER PLAN 2016-2020 PROGRAMS



## OSH Network Sharing

Program 1 – Network and supply chain

Program 2 – OSH through association activities

Program 3 – OSH through social responsibility

Program 4 – OSH to prospective employee



## Mainstreaming Industrial Hygiene

Program 1 – Strengthening industrial hygiene management

Program 2 – Comprehensive chemical health risk assessment

Program 3 – Occupational health services in the workplace

Program 4 – Industrial hygiene outreach

Program 5 – Effective enforcement of industrial hygiene legislation

# OSH MASTER PLAN 2016-2020 PROGRAMS



## International OSH Networking

Program 1 – Collaboration with  
international OSH institute and expert

Program 2 – International OSH standard research

Program 3 – Industrial hygiene collaborative network at  
national and international level



A nighttime photograph of the Kuala Lumpur skyline. The Petronas Twin Towers are the most prominent feature on the right, illuminated with white lights. Other skyscrapers and buildings are visible in the background, some with warm yellow lights. The foreground shows dark silhouettes of trees and some lower-level buildings with lights. A semi-transparent white banner is overlaid across the middle of the image.

**THANK YOU**