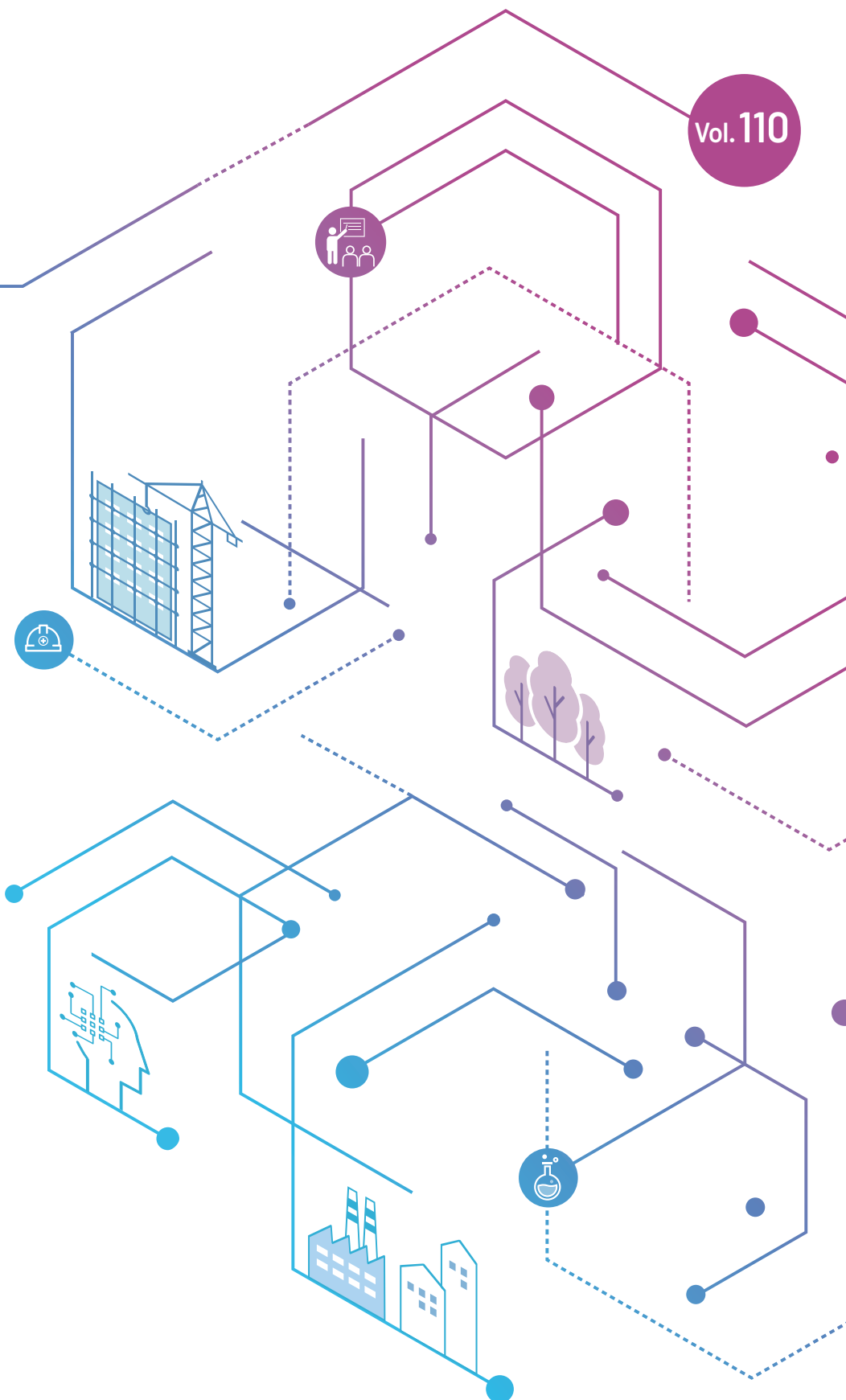


Vol. 110

KOSHA NEWS

APRIL 2021

Protecting Worker's
Life and Health



Contents

In 2021, what's new in KOSHA?

[Financial Support and Contracted Programs]

Improved Workflow of the Clean Workplace Support Program	02
Streamlining of Review Process for Loan Programs	04
Subsidizing Replacement and Retrofitting of Hazardous Machinery and Processes as Part of the Korean "New Deal" on Safety	05
Contracted Occupational Accident Prevention Management for Workplaces	06
More Small Businesses Now Subject to Health Management	08
Workers' Health Centers	09

In 2021,

What's new in KOSHA?

This year, KOSHA extensively reorganize its businesses in order to better the working environment for the safety and wellbeing of workers. Major Projects of KOSHA come in four(4) categories :

1. Projects to Reduce Fatalities
2. Financial Support and Contracted Projects
3. Projects in accordance with Regulations and Policies
4. Education and Innovation Projects

In this issue, we will introduce the major projects of KOSHA's Financial Support and Contracted Projects

Financial Support and Contracted Programs

Improved Workflow of the Clean Workplace Support Program

Abolition of supplier subsidies and exemption from investment consulting

Program

Clean Workplace Support

Major changes

---◇ For all projects

- In order for amicable budget control of Clean Workplace program during an year, the amount determined for available subsidy could be maximum 120% or less (including the amount carry-over from the earlier year) of the budget per program category*

* Clean Workplace Support program consist of 4 projects : Clean Certification, Fall Prevention, High-risk Reduction, and Prevention at Industrial Complex

- Delegation of supplier subsidy system is no longer available

---◇ For “Clean Certification” project

- New deadlines introduced for fair allocation of budget (now received on a certain date for each quarter, instead of year-round)
- Businesses that receive consulting from designated safety and health agencies may substitute for investment consulting
- Subsidies for pallet racks and other such products subject to the sunset system, due to their relative ineffectiveness in preventing workplace accidents, are no longer available



Improved Workflow of the Clean Workplace Support Program

Program

Clean Workplace Support

Major changes

--- For “Clean Certification” and “High-risk Reduction” projects

- Projects with an estimated construction cost of about 8,900 USD or more each are now required to submit cost estimates produced by agencies specialized in costing

--- For “Fall Prevention” projects

- The range of fall-preventing safety products eligible for subsidies (ladder-type work stools) has been expanded
 - * Subsidies are available for up to two ladder-type work stools per site
- The process has been changed so that business owners now have to apply for subsidies separately after requesting the completion of investment

--- For “High-risk Reduction” projects

- Subsidies for these projects are to be made available twice a year only (based on the date which determines subsidy amount)
- The types of equipment eligible for subsidies have been reduced to 23 types
 - * These are 23 types of “facilities and equipment recognized and designated by KOSHA as necessary for reducing hazards and risks toward preventing fatal accidents.”



--- Follow-up technical instruction

- Now provided by not only contracted agencies but also KOSHA.
 - * Specifics of instruction, including durations and methods, are to be announced later.

Streamlining of Review Process for Loan Programs

Review of Investment Plans and Deliberation by Investment Review Committee

Program

Loans for Occupational Accident-Prevention Facilities

Major changes --- **Simplification of process of verifying and reviewing investment plans**

- On-site checks for verifying investment plans can now be performed either by on-site checks or via document-based review to minimize the need for on-site visits and shorten the time it takes for investment decisions to be made.

※ Investment plan verification records must indicate documents that have been reviewed.

--- **Cost estimates* produced by specialized agencies are now required for any products need to be constructed for use (e.g., automated facilities).**

- To be used as evidence of determining the amount of investment, in case of the products need to be constructed.

* Cost estimates must be compiled according to the Estimated Cost Standard that is part of the Ministry of Economy and Finance's Contracting Rules.



--- **Simplification of the process of reporting to the Investment Screening Committee**

- Deliberation by the Committee may be forgone altogether for urgent projects, with investments reported to the Committee ex-post.

Subsidizing Replacement and Retrofitting of Hazardous Machinery and Processes as Part of the Korean “New Deal” on Safety

Introduction of the Safety Investment Innovation Program

Program

Safety Investment Innovation Program

Major changes

---◇ **New program for subsidizing small and medium enterprises (up to 49 employees each) using hazardous machinery, equipment, and processes**

- KRW 90.84 billion to be invested over a three-year period from 2021 to 2023 (KRW 32.71 billion in 2021 alone) to subsidize 50 percent of the costs of replacing/retrofitting hazardous machinery and processes (up to KRW 100 million per business).

---◇ **New policy program with a post-pandemic, contactless application process**

- Contactless and online program, with accountable management by the headquarters.

---◇ **Short-term program with massive budgets, and an execution structure reflecting such budgets**

- The administrative requirements have been simplified as much as possible in light of the need for the involvement of external parties (cost estimation, auditing, etc.), use of diverse financing methods, removal of barriers to small businesses, and communication of all status changes via text message.

---◇ **Designed to suit the government’s policy to reduce fatalities by 50 percent**

- Program intended to improve root processes in order to ensure fundamental safety against fatal accidents.



Contracted Occupational Accident Prevention Management for Workplaces

Number of Applications “Faulty Workplaces” Can File Now Limited, and Range of Eligible Businesses Broadened

Program

Contracted Accident Prevention Management

Major changes

---⬡ The maximum number of applications that “faulty workplaces*” can file has been limited to increase available support for those workplaces.

- Up to six times (bi-monthly) for chemical/safety businesses and up to three times for construction/service businesses

* What is 'faulty workplaces'?

Workplaces where accidents causing injuries or deaths of workers occurred; or whose safety and health is badly managed.

---⬡ The scope of eligible businesses has been expanded to include not only small manufacturers (with fewer than 50 employees each) but also high-risk and non-manufacturing workplaces.*

* Newly eligible businesses include wholesale/retail distributors of hazardous machinery/chemicals, hygiene and related service businesses, logistics and warehousing businesses, and forestry businesses.



---⬡ Processes for selecting workplaces have been diversified (with the headquarters selecting businesses required to apply to the program or wishing to extend their contracts, and branch offices selecting other businesses).

Contracted Occupational Accident Prevention Management for Workplaces

Program

Contracted Accident Prevention Management

Major changes

--- Eliminating blind spots in accordance with the Act on Punishment of Major Industrial Disasters

- Construction industry: Safety management support, via agencies specialized in construction accidents, for small general or specialized construction sites worth less than KRW 100 million each.
- Manufacturing industry: Up to 50% of annual budget to be concentrated on small businesses with fewer than five employees each.

--- Construction and service targets for 2021

- Construction: Continued instruction support (on up to three occasions) for construction sites where flammable materials are used, regardless of the length of the remaining work period or the frequency of support provided previously.
- Services: Support to be concentrated on 1,169 workplaces directly using two-wheel vehicles.

--- Close support for voluntary safety management at manufacturers with fewer than 50 employees into the second year of the program (65,800 occasions in total)

- 14 occasions of support (12 up-close support and two one-point lessons) for each of the 4,700 workplaces being supported.
- Number of support-providing organizations increased from six regional headquarters to six regional headquarters plus the Gyeonggi Regional Headquarters.*

* The 20 service agencies affiliated with the Incheon Regional Headquarters were divided, and nine of them were transferred to the Gyeonggi Regional Headquarters.



More Small Businesses Now Subject to Health Management

Construction Businesses Included to Eliminate Blind Spots

Program

Technical Support for Health Management at Small Workplaces

Major changes

---○ **Construction businesses have been made newly subject to required workers' health management in order to eliminate blind spots in safety control.**

- Construction businesses hiring fewer than 50 employees (working on projects worth KRW 100 million to KRW 80 billion) have been added to the list of businesses subject to asphyxiation, poisoning, and heat illness management.

* To protect workers against adverse health impacts of summer heat, curing, and finishing work (painting and other finishes, etc.).

---○ **Target management for enhanced program flexibility**

- 90,000 sessions of support provided for 30,000 businesses in 2020 → 71,590 sessions to be provided in 2021

- Participating businesses are given target numbers of sessions they need to complete so as to ensure flexibility in the program's operation.

- High-risk businesses are required to receive intensive technical support (bi-monthly visits by agents up to six times a year) to ensure continuity of care.

* Low-risk businesses receive agents, who provide basic industrial health training in addition to analysis of working conditions and specialized assessments, once or twice a year.

---○ **Agencies specialized in industrial safety are encouraged to participate in order to help diversify the agencies providing services under the program.**

- Specialized agencies (with specialties in health management, working condition analysis, etc.) are encouraged to participate, after the program's restructuring, so that no single agency can monopolize service provision.

---○ **Higher service fees: Program budget increased by KRW 689 million, raising it from KRW 5.61 billion to KRW 6.3 billion.**



Workers' Health Centers

Expansion of the Workers Trauma Centers and Contactless Services

Program

Workers' Health Centers (run by contracted parties)

Major changes

- ⬠ Trauma Centers: five more added.
 - ⬠ Essential workers: Concentration on preventing and managing work-related illnesses among essential workers (caregivers, street sweepers, delivery crew, etc.).
 - ⬠ Enhanced contactless services: The mobile app has been upgraded to provide better contactless health counseling and video conferencing online.
 - ⬠ Monitoring and oversight of the centers' personnel and budgets reinforced after the reform of the operating plan review process.
- Operating plans for the centers (and their branches) for 2021 have been reviewed, first, by the working departments and, second, by the headquarters.



Published by

Korea Occupational Safety and Health Agency
400 Jongga-ro, Jung-gu, Ulsan,
44429 Republic of Korea

Tel. +82 52 7030 745

Fax. +82 52 7030 326

E-mail. overseas@kosha.or.kr

Web(Kr). www.kosha.or.kr

Web(En). www.kosha.or.kr/english/index.do

Copyright © 2019 by KOSHA For right of reproduction or translation, application should be made to the International Cooperation Center, Korea Occupational Safety and Health Agency.

