



OSH / WSH for YOUNG WORKERS in SINGAPORE



Raymond Wong
Senior Assistant Director
Unions, Youths & Schools
Workplace Safety and Health Council

World Congress on Safety and Health at Work 2017



“Every fatality means a family broken, and deprived of a breadwinner. Every injury and illness means pain and suffering for the worker. Therefore, it is our duty to reduce accidents and injuries to the absolute minimum, by instilling safety and health consciousness, and safe and healthy work practices”

“...so we decided to set a new target to reduce Singapore’s rate to below 1.0 per 100,000 workers in ten years time (2028)”

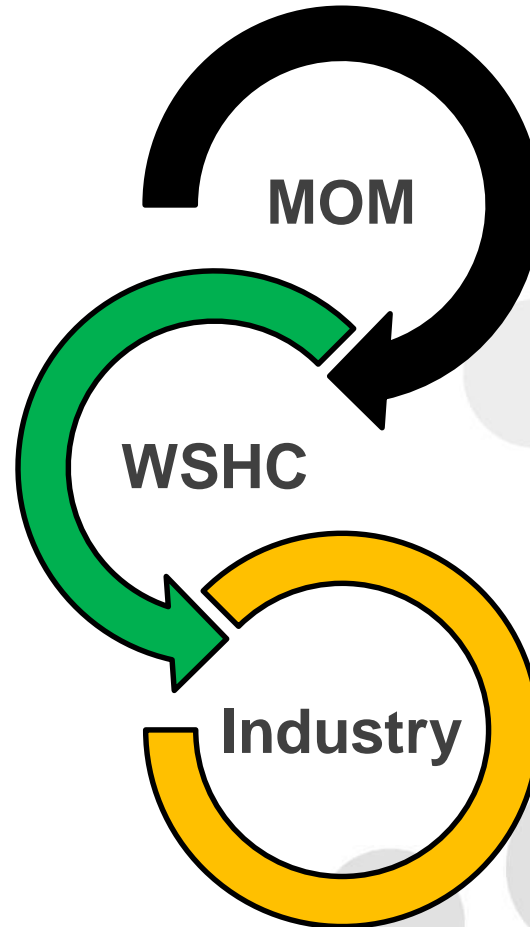
Lee Hsien Loong
Prime Minister Singapore

SCOPE



- **WSH Management in Singapore**
- **WSH Strategy for Youths**
- **Challenges**

SYMBIOTIC RELATIONSHIP



- **Workplace Safety and Health ACT 2006**

“The WSH Act requires stakeholders to take reasonably practicable measures to ensure the safety and health of persons at work”

4 Key Features of WSH Act:

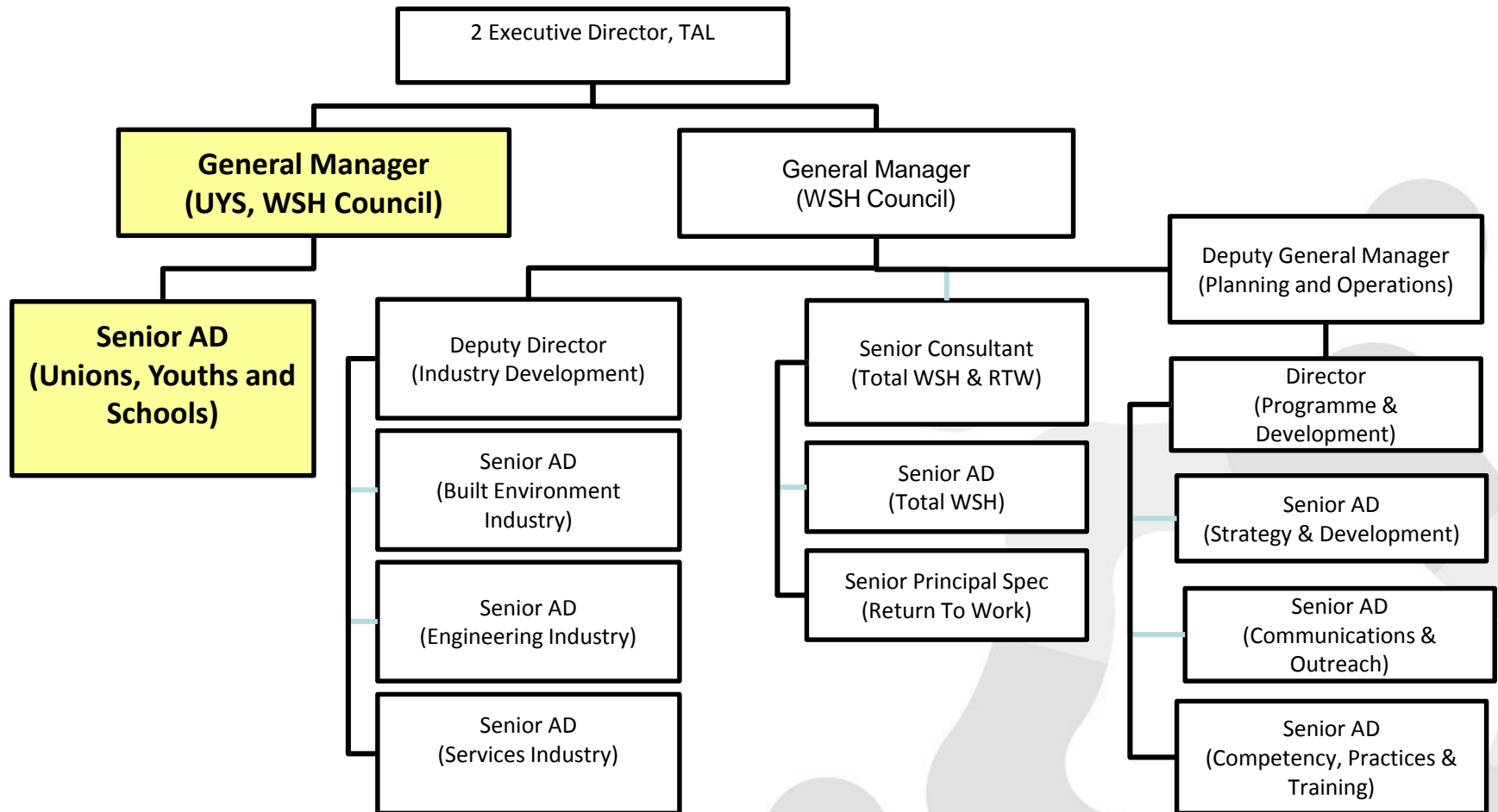
- a. Workplace safety and health is the responsibility of ALL stakeholders
- b. Focuses on workplace safety and health systems and outcomes rather than mere compliance
- c. Facilitates effective enforcement
- d. Imposes higher penalties for non compliance and risky behaviors

OTHER WSH GOVERNANCE



- **25 Subsidiary Legislations**
e.g. WSH (Construction Regulations 2007) / WSH(Safety and Health Management System & Auditing)
- **Code of Practices** *e.g. Risk Management, Working Safely at Heights etc.*
- **Employment Act**
- **Regular Site Inspections/Audits by Regulators/MOM**
- **Prosecution on violators** *(Employers / Occupiers / Project Directors / Engineers / WSHOs)*

WSHC ORGANIZATION CHART



WSHC'S VISION & MISSION



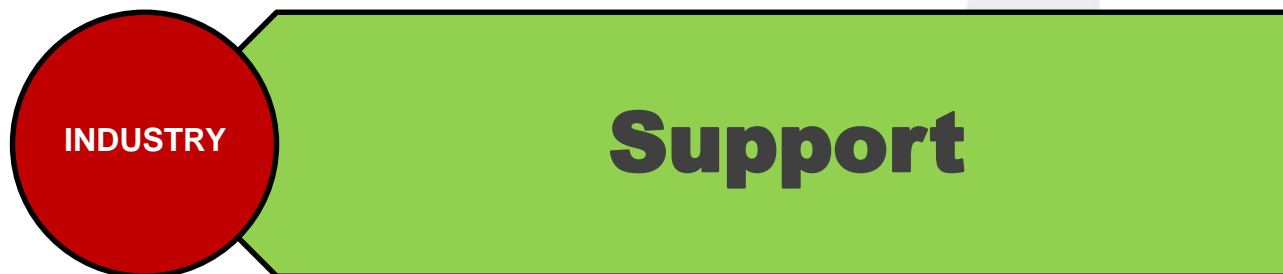
VISION

“Healthy Workforce, Safe Workplace”

MISSION

“To build a healthy workforce and a safe workplace by engaging communities to enhance capabilities and embrace best practices”

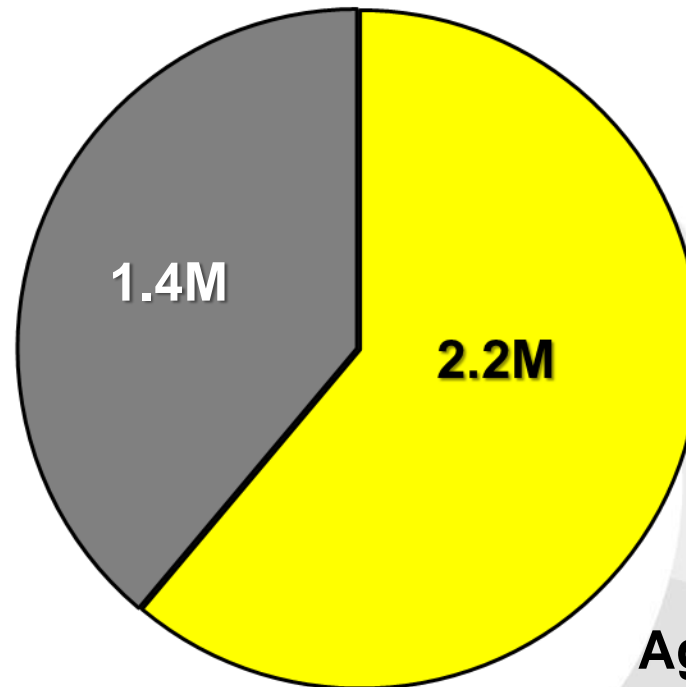
WSHC'S KEY ROLES



WORKFORCE DISTRIBUTION



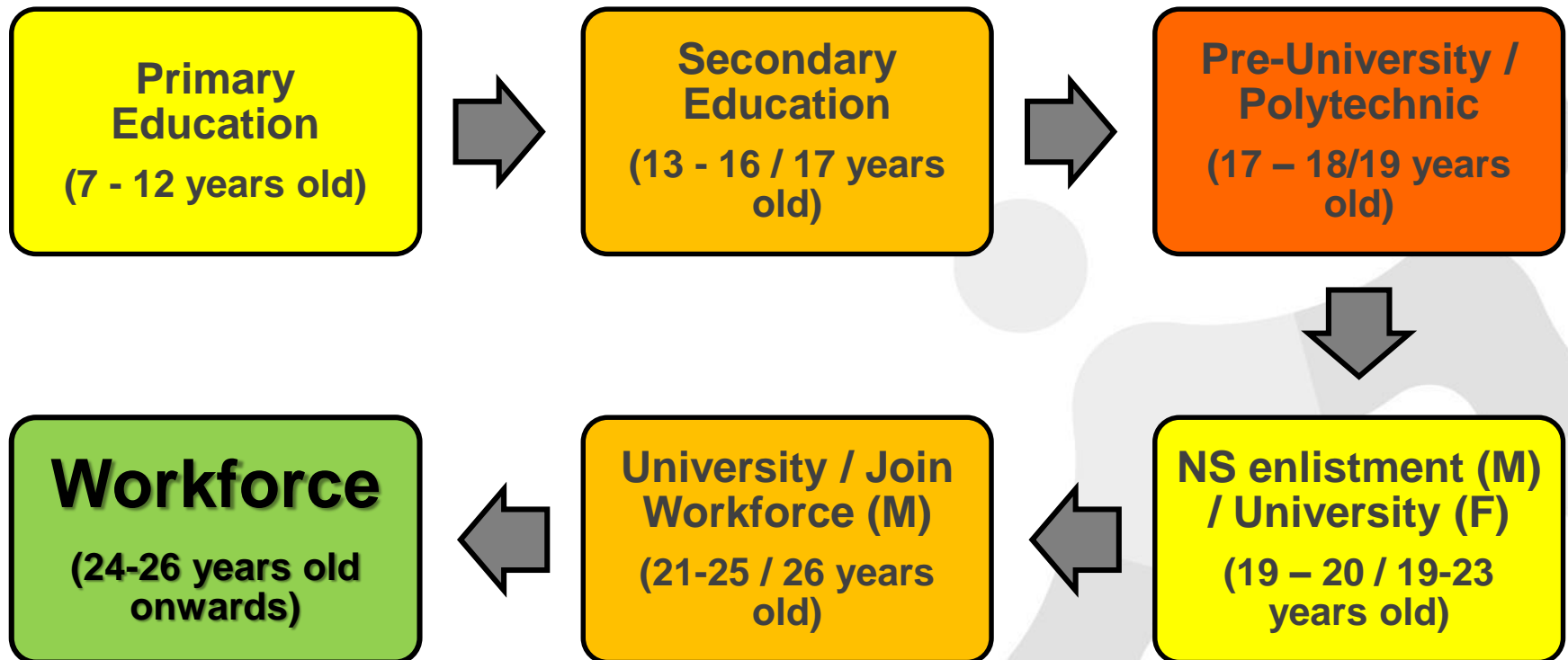
WORKFORCE = 3.6M



■ LOCAL ■ FW

**Age 15-35 years = 600K
(27% of 2.2M)**

LIFE CYCLE OF YOUTHS IN SINGAPORE



Youth : Defined by NYC – age between 15 to 35 years

WSH STRATEGY FOR YOUTHS



Focus #1:

To build the S & H mindset and culture from young in schools

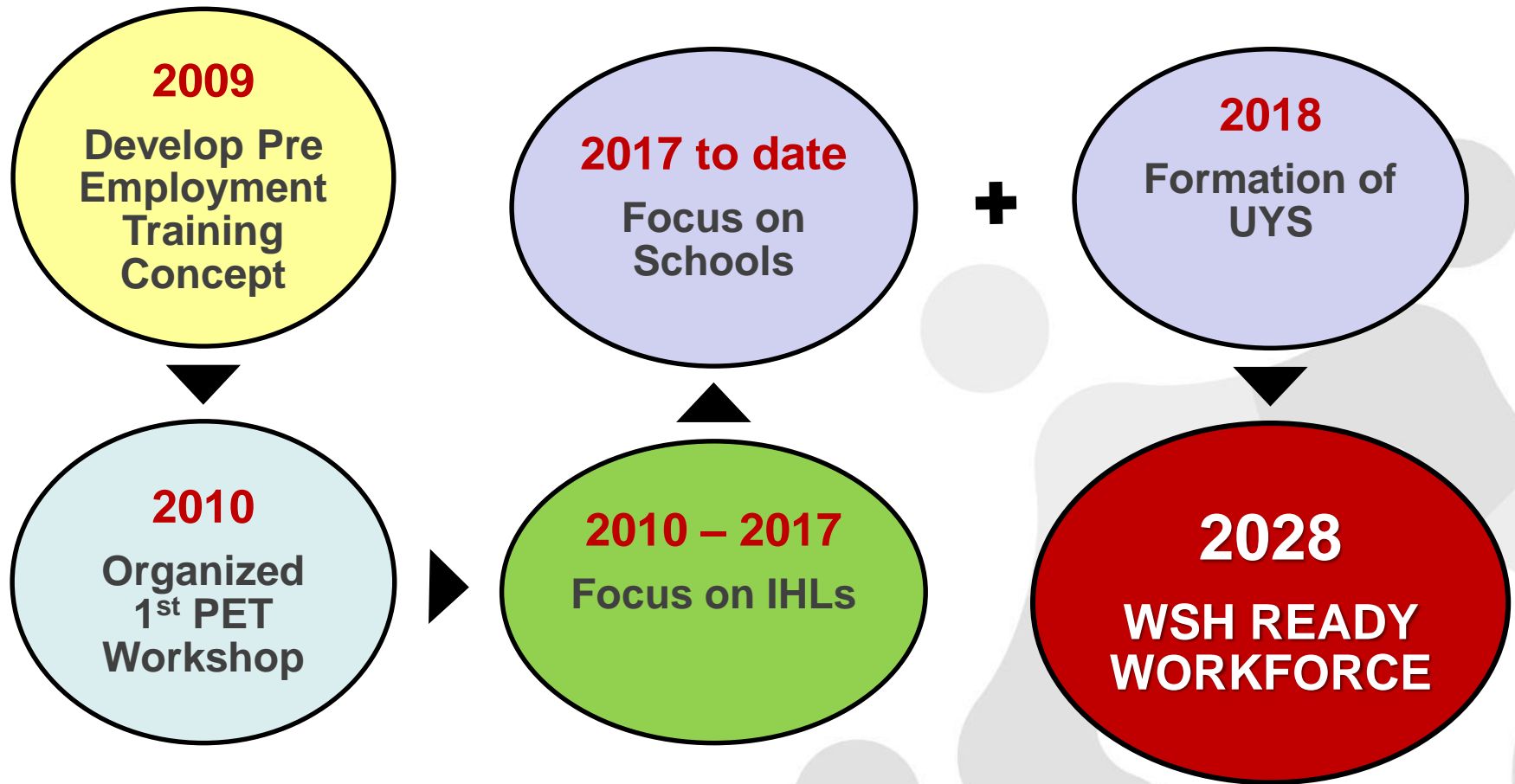
Focus #2:

To imbue WSH training for Pre Employment group at IHLs

Focus #3:

To engage youths interested in WSH and enhance capability of young Workplace Safety & Health officers

WSH JOURNEY



WHAT WE KNOW ABOUT CHILDREN & YOUTHS



- Lack skills and work experience
- Ignorant of the work hazards and risks
- Risk takers
- More prone to accidents and incidents
- A potential danger to himself/herself and others unknowingly

“ Youths need to be equipped with safety skills, knowledge in order to care for themselves & others ”

Rising number of children in near-drowning cases a cause for concern: KK hospital

SINGAPORE - The number of near-drowning cases involving children has gone up in the past five years and doctors at the KK Women's and Children's Hospital (KKH) are concerned.

From 2011 to 2015, there were 104 such cases and 10 deaths, or an average of about 20 near-drowning cases each year. In comparison, the hospital saw between five and 12 such cases a year during the previous five-year period.

"The scary thing about drowning is that it's very silent and can happen in seconds," said Dr Arif Tyebally, who is deputy head of the hospital's emergency medicine department.



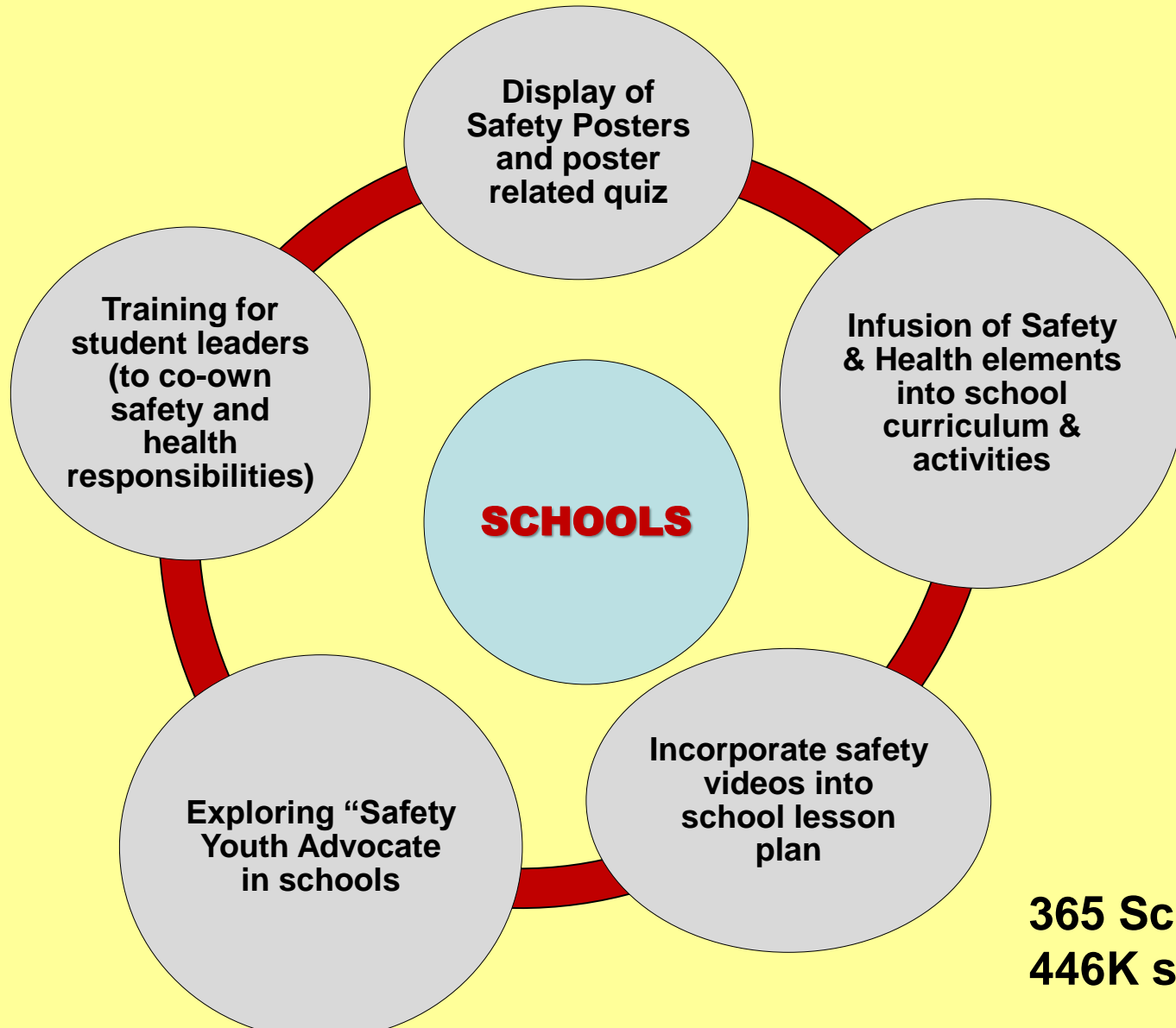
More children hurt in road traffic accidents in first half of 2017

SINGAPORE - A total of 132 children aged 12 and below were injured in road traffic accidents in the first half of 2017, up from 128 for the same period last year.

"We can avoid and prevent needless tragedies, and more can be done to educate and instil road safety habits in young children," said Senior Parliamentary Secretary for the Ministry of Education, Associate Professor Muhammad Faishal Ibrahim.

He was speaking at the closing of the 37th annual Shell Traffic Games - which tests pupils' road safety knowledge - at the Road Safety Community Park in East Coast on Monday (Nov 13).

CULTURE BUILDING: SCHOOLS



365 Schools
446K students

BE AWARE OF YOUR SURROUNDINGS

Avoid handphone use while walking



e. Look. Think. Do.



Prevent all injuries.
Go home safe and healthy.



BE AWARE OF YOUR SURROUNDINGS

Watch out for others



STAY ALERT WHILE WALKING

Watch your step

Stay safe. Look. Think. Do.



Prevent all injuries.
Go home safe and healthy.



DON'T RUN ALONG THE CORRIDORS

Look out for others

Stay safe. Look. Think. Do.



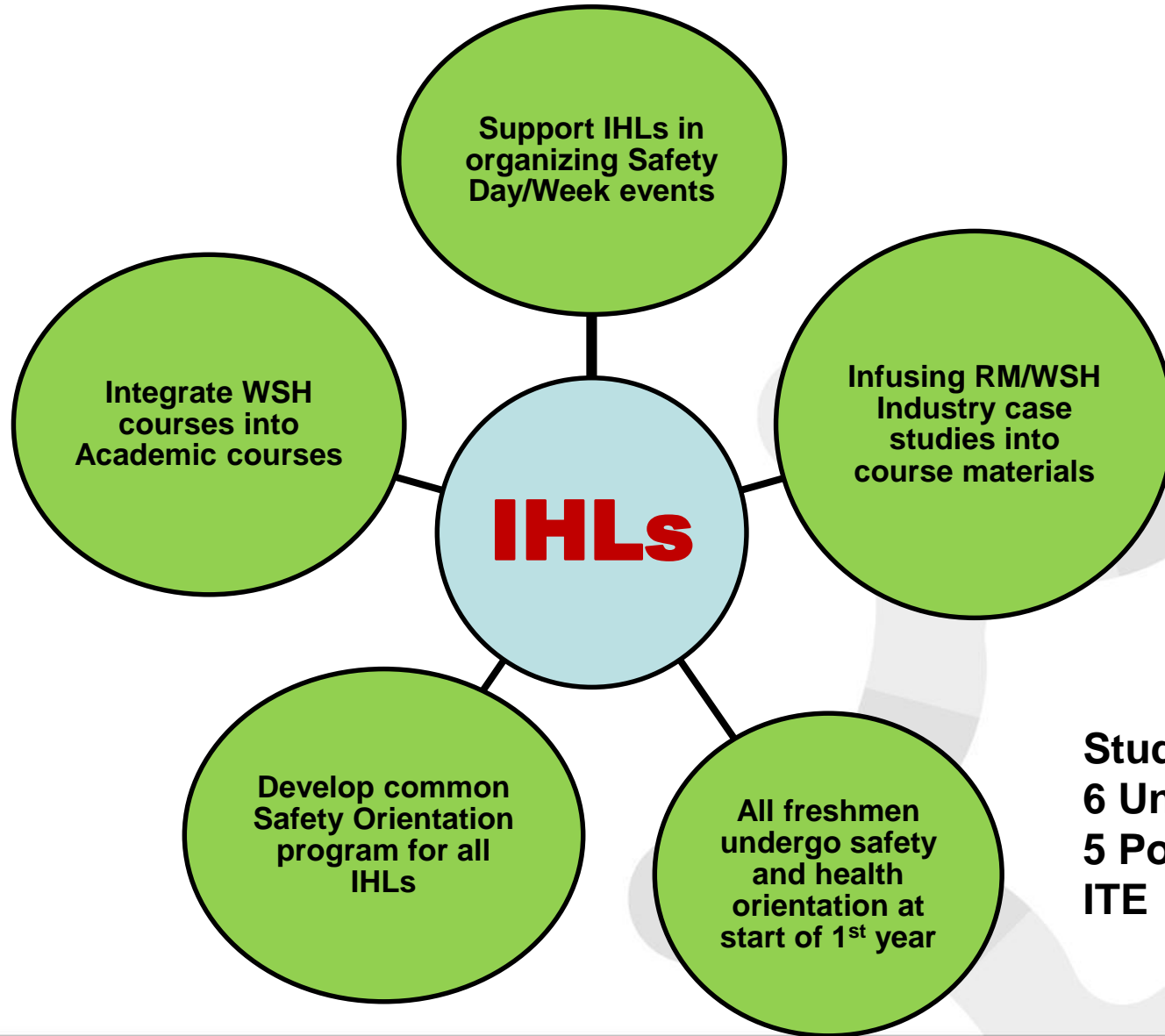
Prevent all injuries.
Go home safe and healthy.



CULTURE BUILDING: SCHOOL STAFF

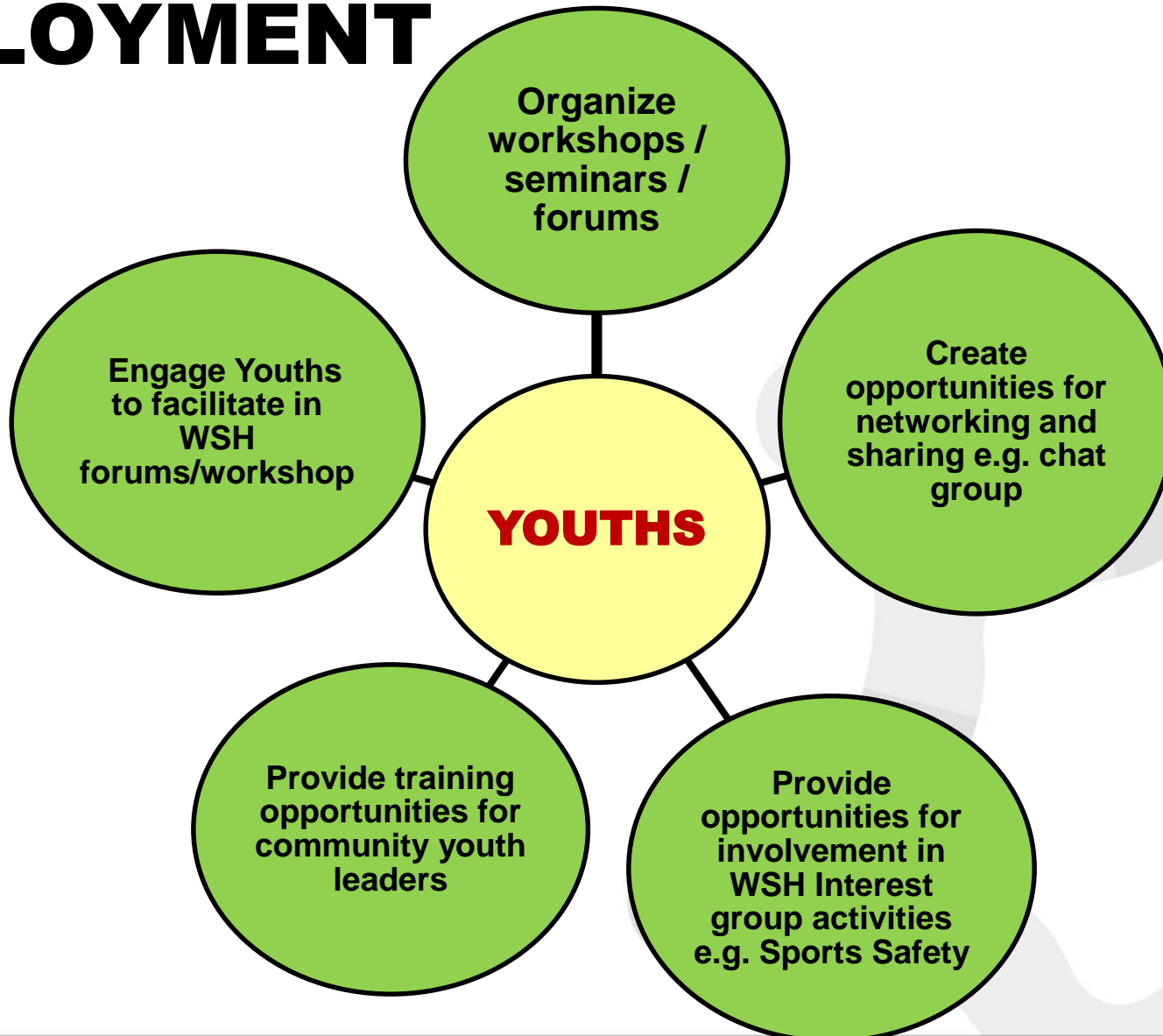


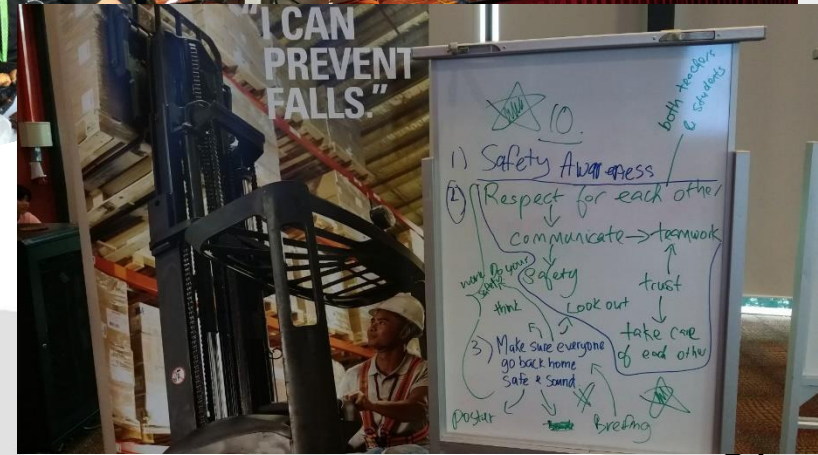
CULTURE BUILDING: IHLS - YOUTHS



**Students=181K
6 Universities/
5 Polytechnics /
ITE**

CULTURE BUILDING: YOUTHS - IN EMPLOYMENT





YOUTH ACTIVITIES



- <https://youtu.be/vk16gY2sgDc>
- [*https://youtu.be/KyhJgTxfAul*](https://youtu.be/KyhJgTxfAul)

RISK ASSESSMENT



LOOK: Look out for potential hazards

THINK: Will the identified hazard cause me harm

DO: Take the necessary appropriate action to remain safe, healthy and secure

WSH CHALLENGES



CHALLENGES

The mindset of Educators

The value of Total WSH

WSH ownership

