

Sa bai dee



Training Program on Occupational Safety and Health

Outline

I. Country Profile

II. OSH Structure

III. Legislations

IV. Challenges

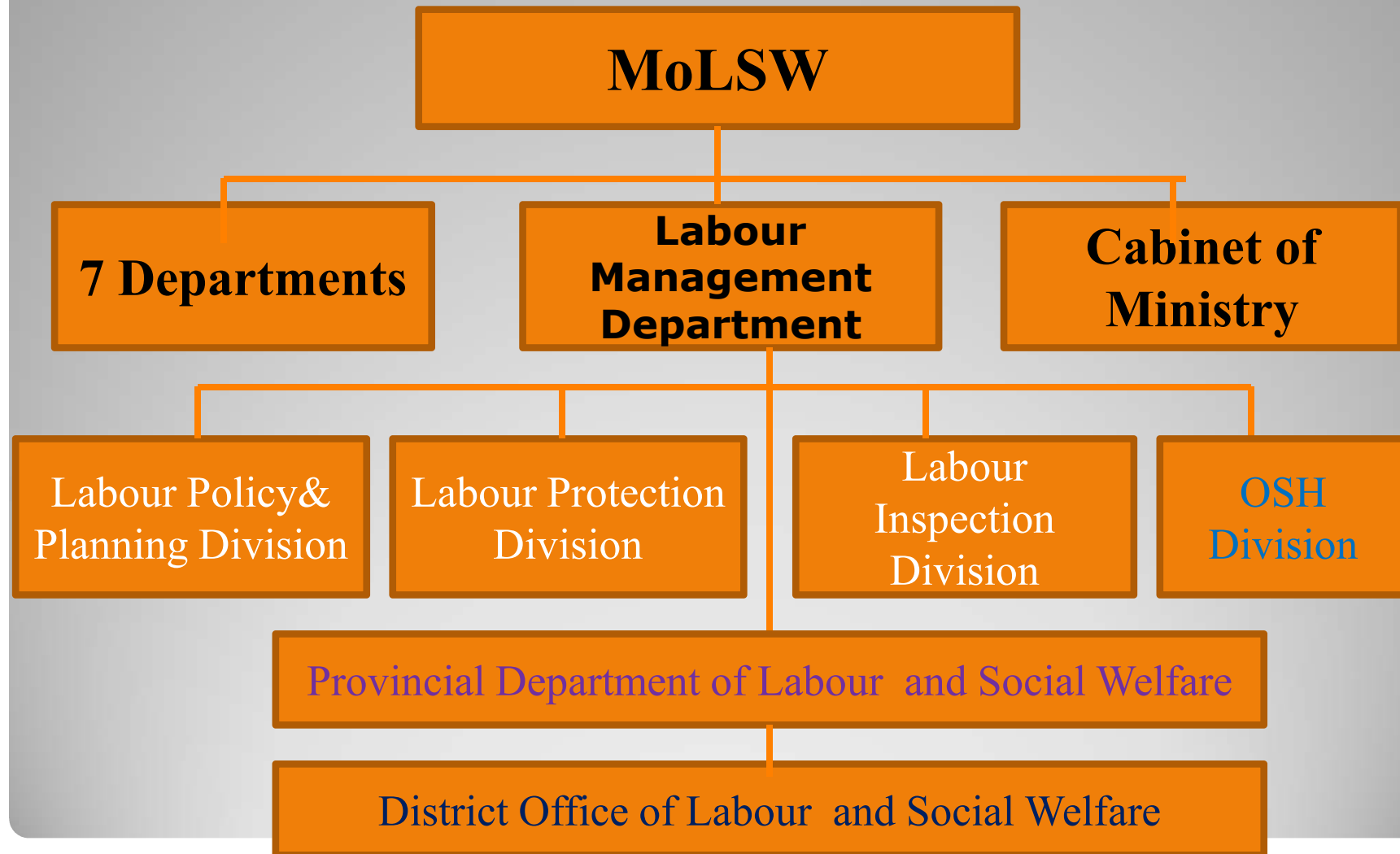
V. Work plan

I. Country Profile

- Laos: Borders with China, Vietnam, Cambodia, Thailand and Myanmar.
- Area: 236,800 sq km.
- Capital: Vientiane
- Population: 6.8 Million
- 18 provinces
- 143 districts



II. OSH Structure



OSH structure (Cont.)

Central Committee on OSH

- The Ministerial Decree No. 4321/MLSW, dated 08 September 2009 on **Central Committee on Occupational Safety and Health:**

1. DG of Labour Management Department, MLSW President
2. Labour Protection Department, Lao Trade Unions Vice
3. Employer's representative Office, LNCCI Vice
4. Hygiene and Prevention Department, MOH Committee

OSH structure (Cont.)

- | | |
|--|------------|
| 5. Industry Department, MOIT | Committee |
| 6. Housing and Urban Planning Department, MPWT | Committee |
| 7. Planting Department, MOAF | Committee |
| 8. Mine Department, MOEM | Committee |
| 9. Vocational Education Department, MoES | Committee |
| 10. MoNRE | Committee |
| 11. Social Security Department | Committee. |

Labour Inspection

Number of enterprises were Inspected

Year	Enterprises	Employees	Remark
2010	1.017	19.013	
2011	2.178	37.755	
2012	2.672	58.255	
2013	2.895	63.258	
2014	2.978	65.000	

Work accident

Year	Member of SSF (Persons)	Accident	No. of Dead	Remark
2005	26.347	158	00	
2006	31.634	233	04	
2007	36.160	138	06	
2008	43.053	115	10	
2009	45.145	151	12	
2010	49.469	142	07	
2011	53.838	170	09	
2012	58.115	212	10	
2013	66.786	226	12	
2014	74.852	219	08	

III. Legislations

- Labour Law (2014)
- Law of Hygiene and Health Promotion
- Law of Social Security (2013)
- Minister Provision: role and responsibilities of the Central Committee on OSH (2009)
- Minister Provision: OSH for Construction Site (2013).
- Minister Provision: Roles of Labour inspection

What we do?

- Trained of Work Improvement on OSH in Small Construction Sites (WISCON).
- Work Improvement in Small Enterprises (WISE).
- Work Improvement in Neighbourhood Development (WIND).
- The basic on Occupational Safety and Health for labour inspectors, workers and employers.
- TOT training and risk assesement for labour inspectors.

TOT Training



Trained Labour
Inspectors year 2012



OSH Improvement



Before

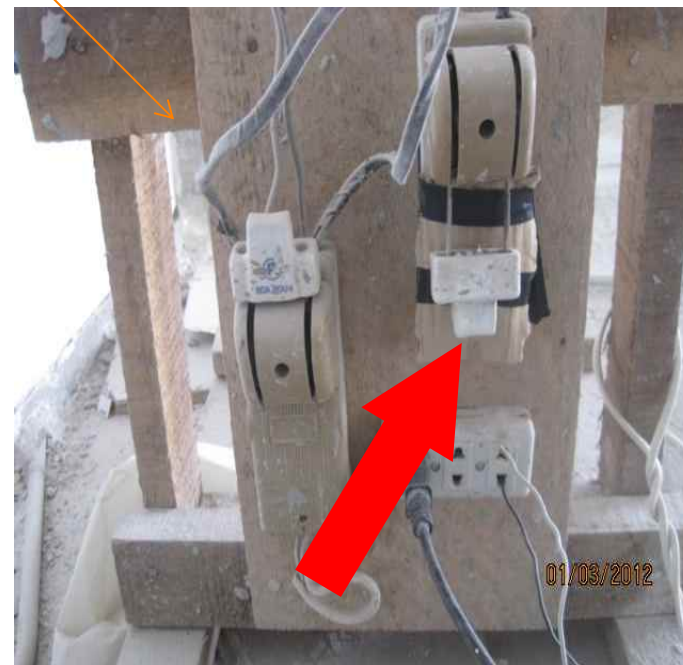


After

- OSH Improvement



OSH Improvement



OSH Improvement



OSH Improvement

IV. Challenges

- OSH is newly established and could not cover all enterprises
- Lack of specific laws and regulations to support OSH
- Lack of tools to perform effective inspection
- Poor records on accidents and health information system
- Budget constraints for supervision and inspection
- Lack of staff and technicians and Poor experiences.

Challenges (Cont.)



Challenges (Cont.)



V. Work plan

- Draft Prime Minister Decree on OSH.
- Draft regulation on list of occupational diseases.
- Improve Minister provision on hazardous work.
- Encourage enterprises establish Safety Officer and OSH Committee at workplace and train them.
- Risk assessment in target factories.



Thank You